

## Product datasheet for **TA811134S**

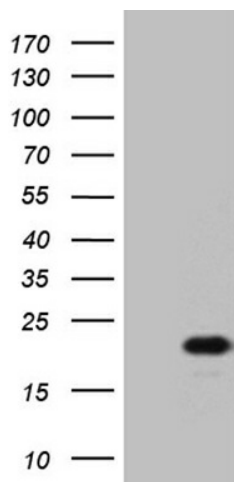
### IL17B Mouse Monoclonal Antibody [Clone ID: OTI8F7]

#### Product data:

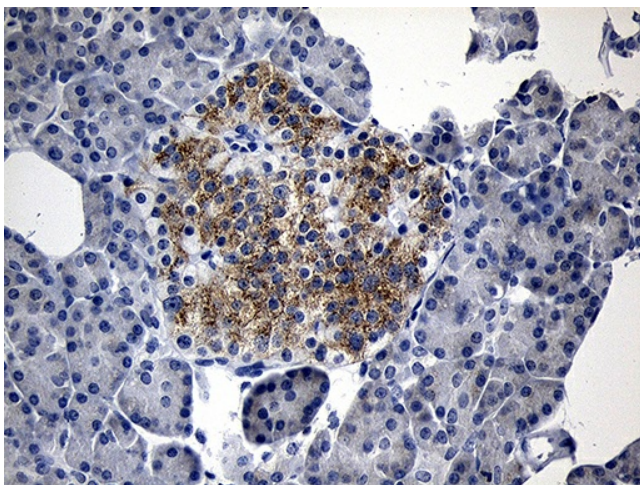
Product Type:	Primary Antibodies
Clone Name:	OTI8F7
Applications:	IHC, WB
Recommended Dilution:	WB 1:2000, IHC 1:500
Reactivity:	Human, Mouse, Rat
Host:	Mouse
Isotype:	IgG2a
Clonality:	Monoclonal
Immunogen:	Full length human recombinant protein of human IL17B (NP_055258) produced in E.coli.
Formulation:	PBS (pH 7.3) containing 1% BSA, 50% glycerol and 0.02% sodium azide.
Concentration:	1 mg/ml
Purification:	Purified from mouse ascites fluids or tissue culture supernatant by affinity chromatography (protein A/G)
Conjugation:	Unconjugated
Storage:	Store at -20°C as received.
Stability:	Stable for 12 months from date of receipt.
Predicted Protein Size:	20.44 kDa
Gene Name:	interleukin 17B
Database Link:	<a href="#">NP_055258</a> <a href="#">Entrez Gene 56069 Mouse</a> <a href="#">Entrez Gene 116472 Rat</a> <a href="#">Entrez Gene 27190 Human</a> <a href="#">Q9UHF5</a>
Synonyms:	IL-17B; IL-20; NIRF; ZCYTO7
Protein Families:	Druggable Genome, Secreted Protein
Protein Pathways:	Cytokine-cytokine receptor interaction



[View online »](#)

**Product images:**

HEK293T cells were transfected with the pCMV6-ENTRY control (Cat# [PS100001], Left lane) or pCMV6-ENTRY IL17B (Cat# [RC220051], Right lane) cDNA for 48 hrs and lysed. Equivalent amounts of cell lysates (5 ug per lane) were separated by SDS-PAGE and immunoblotted with anti-IL17B (Cat# [TA811134])(1:2000). Positive lysates [LY415268] (100ug) and [LC415268] (20ug) can be purchased separately from OriGene.



Immunohistochemical staining of paraffin-embedded Human pancreas tissue within the normal limits using anti-IL17B mouse monoclonal antibody. (Heat-induced epitope retrieval by 1mM EDTA in 10mM Tris buffer (pH8.5) at 120°C for 3min, [TA811134]) (1:500)