

## Product datasheet for **TA811131AM**

### ZNF670 Mouse Monoclonal Antibody (Biotin conjugated) [Clone ID: OTI6E10]

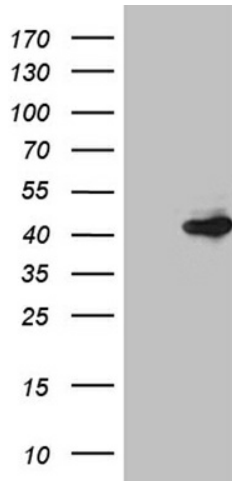
#### Product data:

Product Type:	Primary Antibodies
Clone Name:	OTI6E10
Applications:	IHC, WB
Recommended Dilution:	WB 1:500~2000, IHC 1:500
Reactivity:	Human
Host:	Mouse
Isotype:	IgG1
Clonality:	Monoclonal
Immunogen:	Full length human recombinant protein of human ZNF670 (NP_149990) produced in E.coli.
Formulation:	PBS (pH 7.3) containing 1% BSA, 50% glycerol and 0.02% sodium azide.
Concentration:	0.5 mg/ml
Purification:	Purified from mouse ascites fluids or tissue culture supernatant by affinity chromatography (protein A/G)
Conjugation:	Biotin
Storage:	Store at -20°C as received.
Stability:	Stable for 12 months from date of receipt.
Predicted Protein Size:	44.4 kDa
Gene Name:	zinc finger protein 670
Database Link:	<a href="#">NP_149990</a> <a href="#">Entrez Gene 93474 Human</a> <a href="#">Q9BS34</a>
Synonyms:	FLJ12606; MGC12466
Protein Families:	Transcription Factors

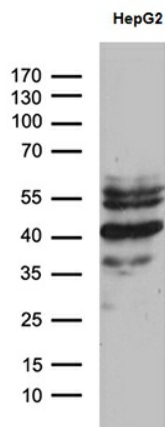


[View online »](#)

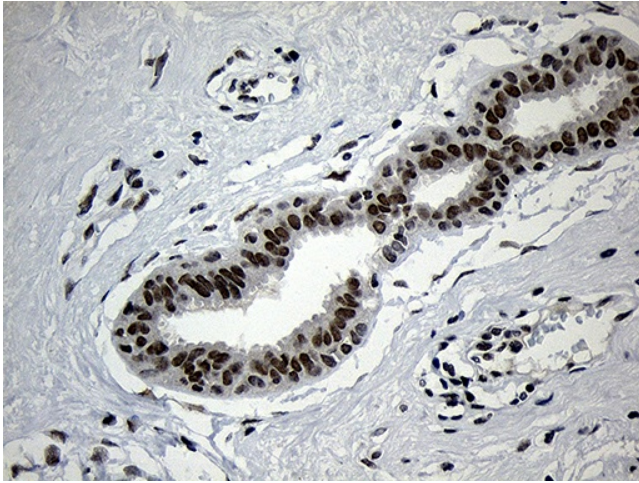
**Product images:**



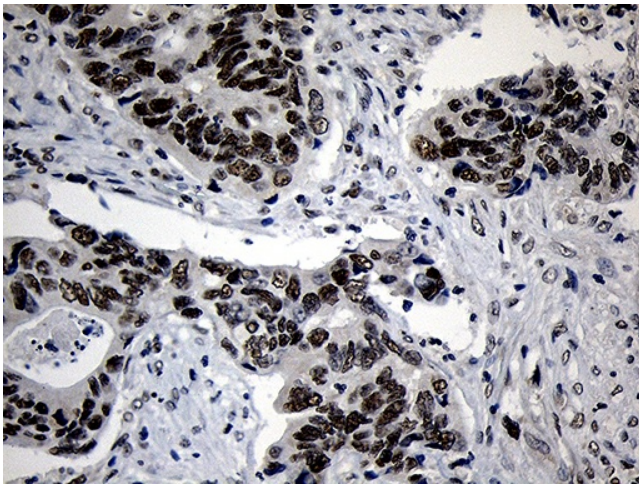
HEK293T cells were transfected with the pCMV6-ENTRY control (Cat# [PS100001], Left lane) or pCMV6-ENTRY ZNF670 (Cat# [RC202785], Right lane) cDNA for 48 hrs and lysed. Equivalent amounts of cell lysates (5 ug per lane) were separated by SDS-PAGE and immunoblotted with anti-ZNF670 (Cat# [TA811131])(1:2000). Positive lysates [LY409661] (100ug) and [LC409661] (20ug) can be purchased separately from OriGene.



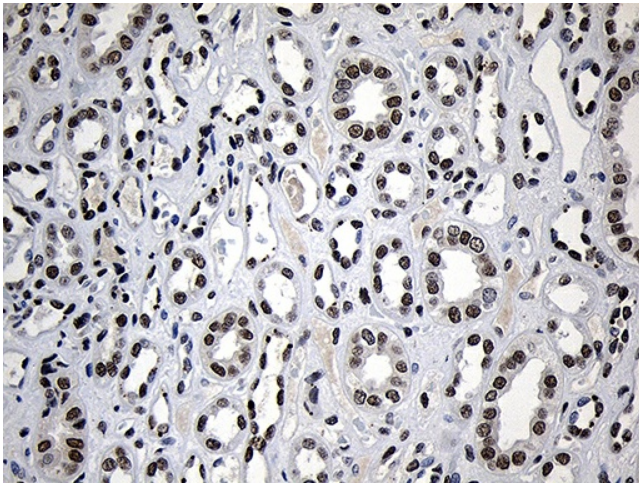
Western blot analysis of extracts (35ug) from Hepg2 cell line by using anti-ZNF670 monoclonal antibody (1:500).



Immunohistochemical staining of paraffin-embedded Human breast tissue within the normal limits using anti-ZNF670 mouse monoclonal antibody. (Heat-induced epitope retrieval by 1mM EDTA in 10mM Tris buffer (pH8.5) at 120°C for 3min, [TA811131]) (1:500)

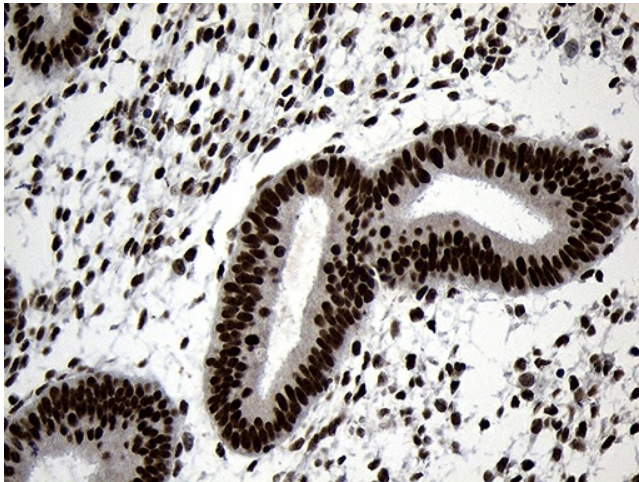


Immunohistochemical staining of paraffin-embedded Adenocarcinoma of Human colon tissue using anti-ZNF670 mouse monoclonal antibody. (Heat-induced epitope retrieval by 1mM EDTA in 10mM Tris buffer (pH8.5) at 120°C for 3min, [TA811131]) (1:500)

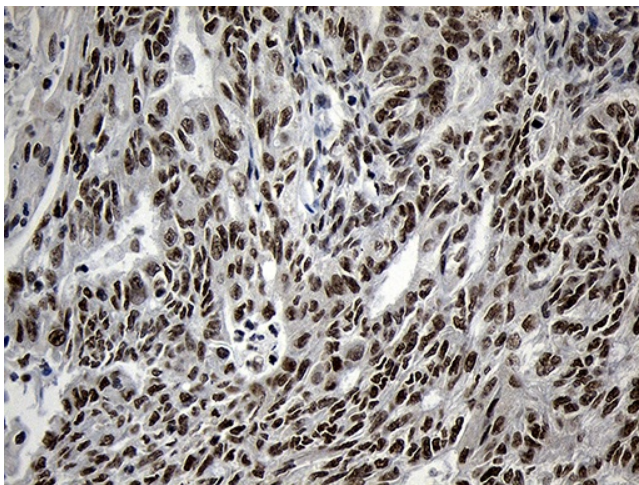


Immunohistochemical staining of paraffin-embedded Human Kidney tissue within the normal limits using anti-ZNF670 mouse monoclonal antibody. (Heat-induced epitope retrieval by 1mM EDTA in 10mM Tris buffer (pH8.5) at 120°C for 3min, [TA811131]) (1:500)

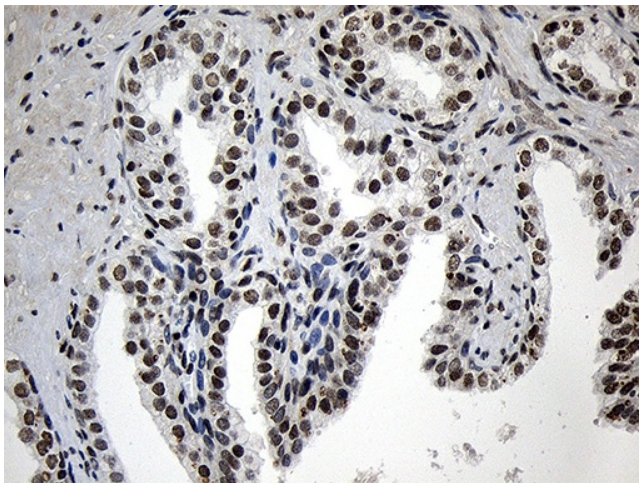




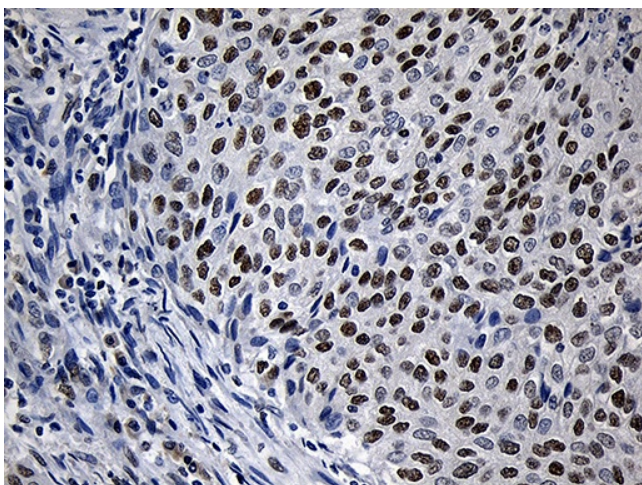
Immunohistochemical staining of paraffin-embedded Human endometrium tissue within the normal limits using anti-ZNF670 mouse monoclonal antibody. (Heat-induced epitope retrieval by 1mM EDTA in 10mM Tris buffer (pH8.5) at 120°C for 3min, [TA811131]) (1:500)



Immunohistochemical staining of paraffin-embedded Adenocarcinoma of Human endometrium tissue using anti-ZNF670 mouse monoclonal antibody. (Heat-induced epitope retrieval by 1mM EDTA in 10mM Tris buffer (pH8.5) at 120°C for 3min, [TA811131]) (1:500)



Immunohistochemical staining of paraffin-embedded Carcinoma of Human prostate tissue using anti-ZNF670 mouse monoclonal antibody. (Heat-induced epitope retrieval by 1mM EDTA in 10mM Tris buffer (pH8.5) at 120°C for 3min, [TA811131]) (1:500)



Immunohistochemical staining of paraffin-embedded Carcinoma of Human bladder tissue using anti-ZNF670 mouse monoclonal antibody. (Heat-induced epitope retrieval by 1mM EDTA in 10mM Tris buffer (pH8.5) at 120°C for 3min, [TA811131]) (1:500)