

Product datasheet for **TA811129**

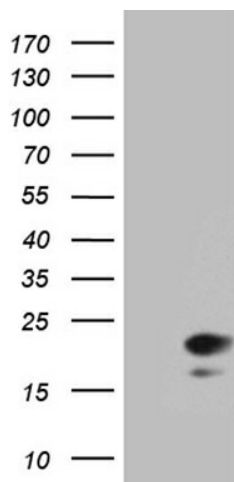
IL17B Mouse Monoclonal Antibody [Clone ID: OT11F10]

Product data:

| | |
|-------------------------|---|
| Product Type: | Primary Antibodies |
| Clone Name: | OT11F10 |
| Applications: | WB |
| Recommended Dilution: | WB 1:2000 |
| Reactivity: | Human, Mouse, Rat |
| Host: | Mouse |
| Isotype: | IgG2b |
| Clonality: | Monoclonal |
| Immunogen: | Full length human recombinant protein of human IL17B (NP_055258) produced in E.coli. |
| Formulation: | PBS (pH 7.3) containing 1% BSA, 50% glycerol and 0.02% sodium azide. |
| Concentration: | 1 mg/ml |
| Purification: | Purified from mouse ascites fluids or tissue culture supernatant by affinity chromatography (protein A/G) |
| Conjugation: | Unconjugated |
| Storage: | Store at -20°C as received. |
| Stability: | Stable for 12 months from date of receipt. |
| Predicted Protein Size: | 20.44 kDa |
| Gene Name: | interleukin 17B |
| Database Link: | NP_055258 Entrez Gene 56069 Mouse Entrez Gene 116472 Rat Entrez Gene 27190 Human Q9UHF5 |
| Synonyms: | IL-17B; IL-20; NIRF; ZCYTO7 |
| Protein Families: | Druggable Genome, Secreted Protein |
| Protein Pathways: | Cytokine-cytokine receptor interaction |



[View online »](#)

Product images:

HEK293T cells were transfected with the pCMV6-ENTRY control (Left lane) or pCMV6-ENTRY IL17B ([RC220051], Right lane) cDNA for 48 hrs and lysed. Equivalent amounts of cell lysates (5 ug per lane) were separated by SDS-PAGE and immunoblotted with anti-IL17B (1:2000). Positive lysates [LY415268] (100ug) and [LC415268] (20ug) can be purchased separately from OriGene.