

Product datasheet for **TA811127AM**

CSPS (SULT1A3) Mouse Monoclonal Antibody (Biotin conjugated) [Clone ID: OTI1E8]

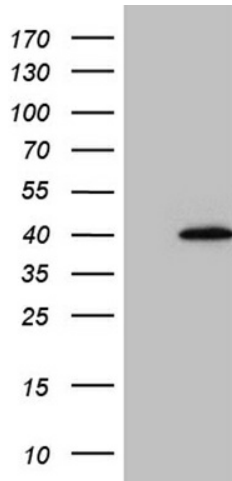
Product data:

Product Type:	Primary Antibodies
Clone Name:	OTI1E8
Applications:	IHC, WB
Recommended Dilution:	WB 1:500~2000, IHC 1:500
Reactivity:	Human
Host:	Mouse
Isotype:	IgG1
Clonality:	Monoclonal
Immunogen:	Full length human recombinant protein of human SULT1A3 (NP_003157) produced in E.coli.
Formulation:	PBS (pH 7.3) containing 1% BSA, 50% glycerol and 0.02% sodium azide.
Concentration:	0.5 mg/ml
Purification:	Purified from mouse ascites fluids or tissue culture supernatant by affinity chromatography (protein A/G)
Conjugation:	Biotin
Storage:	Store at -20°C as received.
Stability:	Stable for 12 months from date of receipt.
Predicted Protein Size:	34 kDa
Gene Name:	sulfotransferase family 1A member 3
Database Link:	NP_003157 Entrez Gene 6818 Human P50224
Synonyms:	HAST; HAST3; M-PST; MGC117469; ST1A5; STM; SULT1A4; TL-PST
Protein Pathways:	Sulfur metabolism

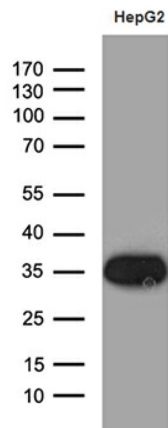


[View online »](#)

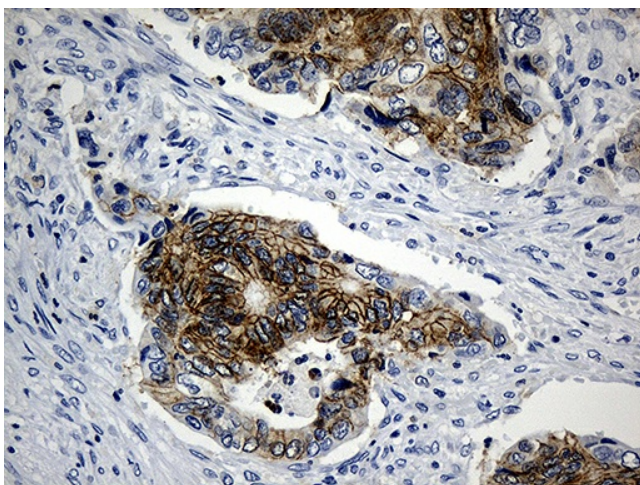
Product images:



HEK293T cells were transfected with the pCMV6-ENTRY control (Cat# [PS100001], Left lane) or pCMV6-ENTRY SULT1A3 (Cat# [RC210772], Right lane) cDNA for 48 hrs and lysed. Equivalent amounts of cell lysates (5 ug per lane) were separated by SDS-PAGE and immunoblotted with anti-SULT1A3 (Cat# [TA811127])(1:2000). Positive lysates [LY418855] (100ug) and [LC418855] (20ug) can be purchased separately from OriGene.



Western blot analysis of extracts (35ug) from Hepg2 cell line by using anti-SULT1A3 monoclonal antibody (1:500).



Immunohistochemical staining of paraffin-embedded Adenocarcinoma of Human colon tissue using anti-SULT1A3 mouse monoclonal antibody. (Heat-induced epitope retrieval by 1mM EDTA in 10mM Tris buffer (pH8.5) at 120°C for 3min, [TA811127]) (1:500)