

## Product datasheet for **TA811120BM**

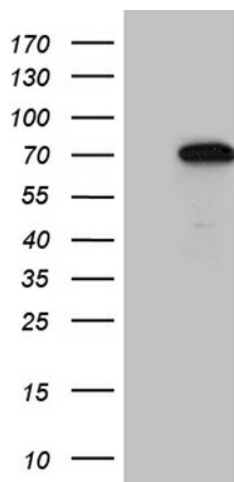
### CCDC22 Mouse Monoclonal Antibody (HRP conjugated) [Clone ID: OTI2A9]

#### Product data:

Product Type:	Primary Antibodies
Clone Name:	OTI2A9
Applications:	WB
Recommended Dilution:	WB 1:2000
Reactivity:	Human, Mouse, Rat
Host:	Mouse
Isotype:	IgG1
Clonality:	Monoclonal
Immunogen:	Full length human recombinant protein of human CCDC22 (NP_054727) produced in E.coli.
Formulation:	PBS (pH 7.3) containing 1% BSA, 50% glycerol.
Concentration:	0.5 mg/ml
Purification:	Purified from mouse ascites fluids or tissue culture supernatant by affinity chromatography (protein A/G)
Conjugation:	HRP
Storage:	Store at -20°C as received.
Stability:	Stable for 12 months from date of receipt.
Predicted Protein Size:	70.6 kDa
Gene Name:	coiled-coil domain containing 22
Database Link:	<a href="#">NP_054727</a> <a href="#">Entrez Gene 54638 Mouse</a> <a href="#">Entrez Gene 317381 Rat</a> <a href="#">Entrez Gene 28952 Human</a> <a href="#">O60826</a>
Synonyms:	CXorf37; JM1; RTSC2



[View online »](#)

**Product images:**

HEK293T cells were transfected with the pCMV6-ENTRY control (Left lane) or pCMV6-ENTRY CCDC22 ([RC201585], Right lane) cDNA for 48 hrs and lysed. Equivalent amounts of cell lysates (5 ug per lane) were separated by SDS-PAGE and immunoblotted with anti-CCDC22 (1:2000). Positive lysates [LY415538] (100ug) and [LC415538] (20ug) can be purchased separately from OriGene.