

Product datasheet for **TA811115S**

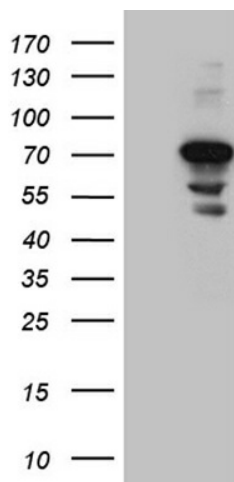
CEP72 Mouse Monoclonal Antibody [Clone ID: OTI1A5]

Product data:

Product Type:	Primary Antibodies
Clone Name:	OTI1A5
Applications:	WB
Recommended Dilution:	WB 1:2000
Reactivity:	Human
Host:	Mouse
Isotype:	IgG1
Clonality:	Monoclonal
Immunogen:	Full length human recombinant protein of human CEP72 (NP_060610) produced in E.coli.
Formulation:	PBS (pH 7.3) containing 1% BSA, 50% glycerol and 0.02% sodium azide.
Concentration:	1 mg/ml
Purification:	Purified from mouse ascites fluids or tissue culture supernatant by affinity chromatography (protein A/G)
Conjugation:	Unconjugated
Storage:	Store at -20°C as received.
Stability:	Stable for 12 months from date of receipt.
Predicted Protein Size:	71.5 kDa
Gene Name:	centrosomal protein 72
Database Link:	NP_060610 Entrez Gene 55722 Human Q9P209
Synonyms:	FLJ10565; KIAA1519; MGC5307



[View online »](#)

Product images:

HEK293T cells were transfected with the pCMV6-ENTRY control (Left lane) or pCMV6-ENTRY CEP72 ([RC201663], Right lane) cDNA for 48 hrs and lysed. Equivalent amounts of cell lysates (5 ug per lane) were separated by SDS-PAGE and immunoblotted with anti-CEP72 (1:2000). Positive lysates [LY413293] (100ug) and [LC413293] (20ug) can be purchased separately from OriGene.