

Product datasheet for **TA81111AM**

CCDC22 Mouse Monoclonal Antibody (Biotin conjugated) [Clone ID: OTI2E4]

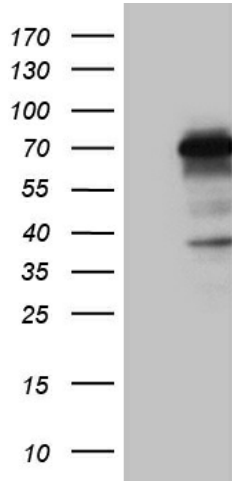
Product data:

Product Type:	Primary Antibodies
Clone Name:	OTI2E4
Applications:	IHC, WB
Recommended Dilution:	WB 1:500~2000, IHC 1:500
Reactivity:	Human, Mouse, Rat
Host:	Mouse
Isotype:	IgG1
Clonality:	Monoclonal
Immunogen:	Full length human recombinant protein of human CCDC22 (NP_054727) produced in E.coli.
Formulation:	PBS (pH 7.3) containing 1% BSA, 50% glycerol and 0.02% sodium azide.
Concentration:	0.5 mg/ml
Purification:	Purified from mouse ascites fluids or tissue culture supernatant by affinity chromatography (protein A/G)
Conjugation:	Biotin
Storage:	Store at -20°C as received.
Stability:	Stable for 12 months from date of receipt.
Predicted Protein Size:	70.6 kDa
Gene Name:	coiled-coil domain containing 22
Database Link:	NP_054727 Entrez Gene 54638 Mouse Entrez Gene 317381 Rat Entrez Gene 28952 Human O60826
Synonyms:	CXorf37; JM1; RTSC2

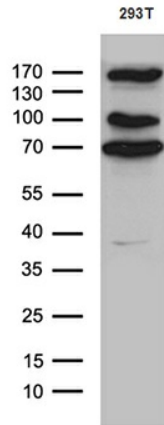


[View online »](#)

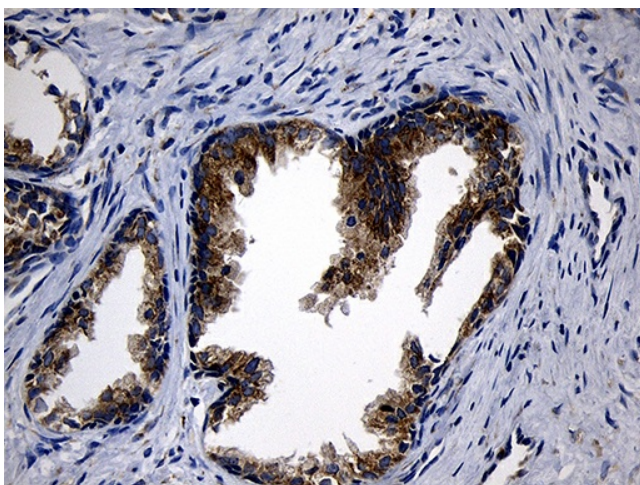
Product images:



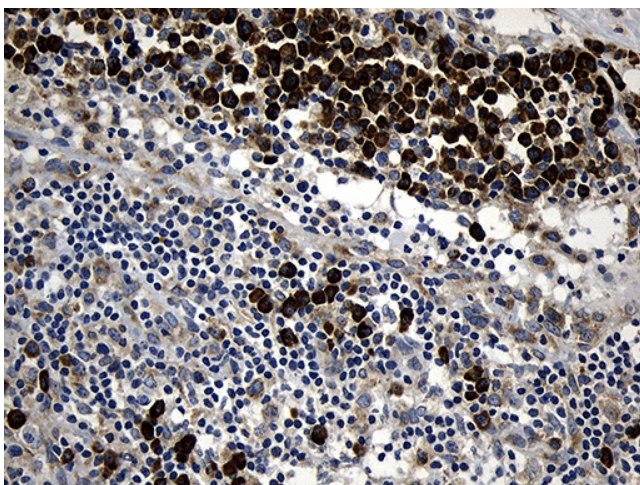
HEK293T cells were transfected with the pCMV6-ENTRY control (Cat# [PS100001], Left lane) or pCMV6-ENTRY CCDC22 (Cat# [RC201585], Right lane) cDNA for 48 hrs and lysed. Equivalent amounts of cell lysates (5 ug per lane) were separated by SDS-PAGE and immunoblotted with anti-CCDC22 (Cat# [TA811111])(1:2000). Positive lysates [LY415538] (100ug) and [LC415538] (20ug) can be purchased separately from OriGene.



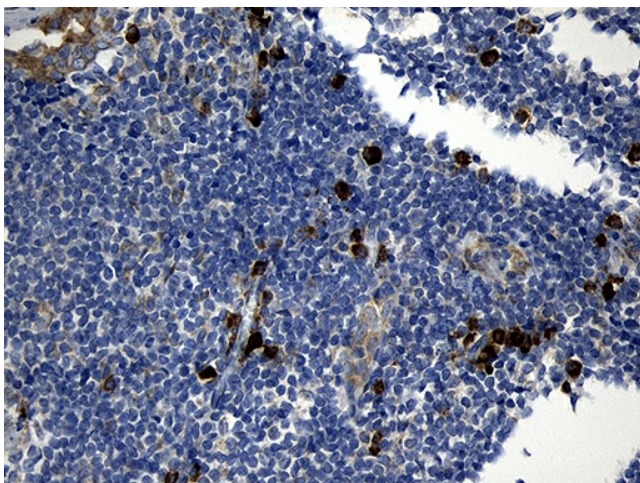
Western blot analysis of extracts (35ug) from 293T cell line by using anti-CCDC22 monoclonal antibody (1:500).



Immunohistochemical staining of paraffin-embedded Human prostate tissue within the normal limits using anti-CCDC22 mouse monoclonal antibody. (Heat-induced epitope retrieval by 1mM EDTA in 10mM Tris buffer (pH8.5) at 120°C for 3min, [TA811111]) (1:500)



Immunohistochemical staining of paraffin-embedded Carcinoma of Human bladder tissue using anti-CCDC22 mouse monoclonal antibody. (Heat-induced epitope retrieval by 1mM EDTA in 10mM Tris buffer (pH8.5) at 120°C for 3min, [TA811111]) (1:500)



Immunohistochemical staining of paraffin-embedded Human tonsil within the normal limits using anti-CCDC22 mouse monoclonal antibody. (Heat-induced epitope retrieval by 1mM EDTA in 10mM Tris buffer (pH8.5) at 120°C for 3min, [TA811111]) (1:500)