

## Product datasheet for **TA811108AM**

### SMARCD3 Mouse Monoclonal Antibody (Biotin conjugated) [Clone ID: OTI7H8]

#### Product data:

Product Type:	Primary Antibodies
Clone Name:	OTI7H8
Applications:	WB
Recommended Dilution:	WB 1:2000
Reactivity:	Human, Mouse, Rat
Host:	Mouse
Isotype:	IgG1
Clonality:	Monoclonal
Immunogen:	Full length human recombinant protein of human SMARCD3 (NP_001003802) produced in E.coli.
Formulation:	PBS (pH 7.3) containing 1% BSA, 50% glycerol and 0.02% sodium azide.
Concentration:	0.5 mg/ml
Purification:	Purified from mouse ascites fluids or tissue culture supernatant by affinity chromatography (protein A/G)
Conjugation:	Biotin
Storage:	Store at -20°C as received.
Stability:	Stable for 12 months from date of receipt.
Predicted Protein Size:	53.5 kDa
Gene Name:	SWI/SNF related, matrix associated, actin dependent regulator of chromatin, subfamily d, member 3
Database Link:	<a href="#">NP_001003802</a> <a href="#">Entrez Gene 66993</a> <a href="#">MouseEntrez Gene 296732</a> <a href="#">RatEntrez Gene 6604</a> <a href="#">Human Q6STE5</a>



[View online »](#)

**Background:**

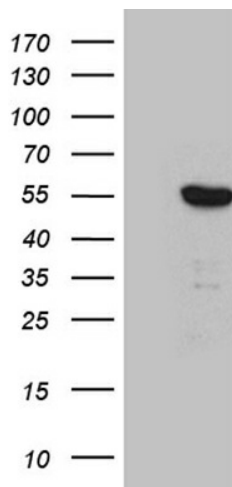
The protein encoded by this gene is a member of the SWI/SNF family of proteins, whose members display helicase and ATPase activities and which are thought to regulate transcription of certain genes by altering the chromatin structure around those genes. The encoded protein is part of the large ATP-dependent chromatin remodeling complex SNF/SWI and has sequence similarity to the yeast Swp73 protein. Multiple alternatively spliced transcript variants have been found for this gene, but the biological validity of some variants has not been determined. [provided by RefSeq, Jul 2008]

**Synonyms:**

BAF60C; CRACD3; Rsc6p

**Protein Families:**

Druggable Genome, Transcription Factors

**Product images:**

HEK293T cells were transfected with the pCMV6-ENTRY control (Left lane) or pCMV6-ENTRY SMARCD3 ([RC201135], Right lane) cDNA for 48 hrs and lysed. Equivalent amounts of cell lysates (5 ug per lane) were separated by SDS-PAGE and immunoblotted with anti-SMAR. Positive lysates [LY424015] (100ug) and [LC424015] (20ug) can be purchased separately from OriGene.