

Product datasheet for **TA811107AM**

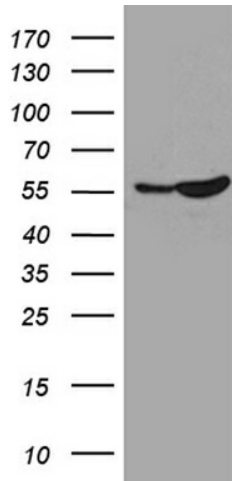
SMARCD3 Mouse Monoclonal Antibody (Biotin conjugated) [Clone ID: OTI4G3]

Product data:

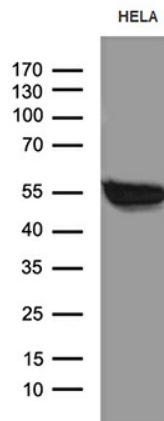
Product Type:	Primary Antibodies
Clone Name:	OTI4G3
Applications:	WB
Recommended Dilution:	WB 1:500~2000
Reactivity:	Human, Mouse, Rat
Host:	Mouse
Isotype:	IgG1
Clonality:	Monoclonal
Immunogen:	Full length human recombinant protein of human SMARCD3 (NP_001003802) produced in E.coli.
Formulation:	PBS (pH 7.3) containing 1% BSA, 50% glycerol and 0.02% sodium azide.
Concentration:	0.5 mg/ml
Purification:	Purified from mouse ascites fluids or tissue culture supernatant by affinity chromatography (protein A/G)
Conjugation:	Biotin
Storage:	Store at -20°C as received.
Stability:	Stable for 12 months from date of receipt.
Predicted Protein Size:	53.5 kDa
Gene Name:	SWI/SNF related, matrix associated, actin dependent regulator of chromatin, subfamily d, member 3
Database Link:	NP_001003802 Entrez Gene 66993 MouseEntrez Gene 296732 RatEntrez Gene 6604 Human Q6STE5
Synonyms:	BAF60C; CRACD3; Rsc6p
Protein Families:	Druggable Genome, Transcription Factors



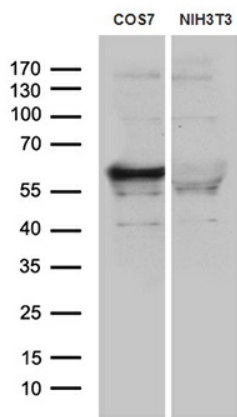
[View online »](#)

Product images:


HEK293T cells were transfected with the pCMV6-ENTRY control (Cat# [PS100001], Left lane) or pCMV6-ENTRY SMARCD3 (Cat# [RC201135], Right lane) cDNA for 48 hrs and lysed. Equivalent amounts of cell lysates (5 ug per lane) were separated by SDS-PAGE and immunoblotted with anti-SMARCD3 (Cat# [TA811107])(1:2000). Positive lysates [LY424015] (100ug) and [LC424015] (20ug) can be purchased separately from OriGene.



Western blot analysis of extracts (35ug) from HELA cell line by using anti-SMARCD3 monoclonal antibody (1:500).



Western blot analysis of extracts (35ug) from cos7 and 3T3 cell lines by using anti-SMARCD3 monoclonal antibody (1:500).