

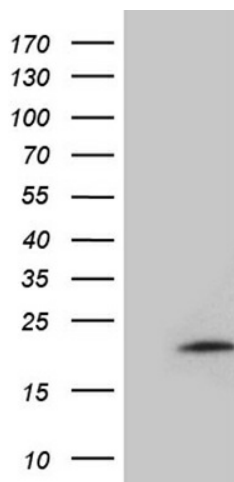
## Product datasheet for **TA811106M**

### MMGT1 Mouse Monoclonal Antibody [Clone ID: OTI4D7]

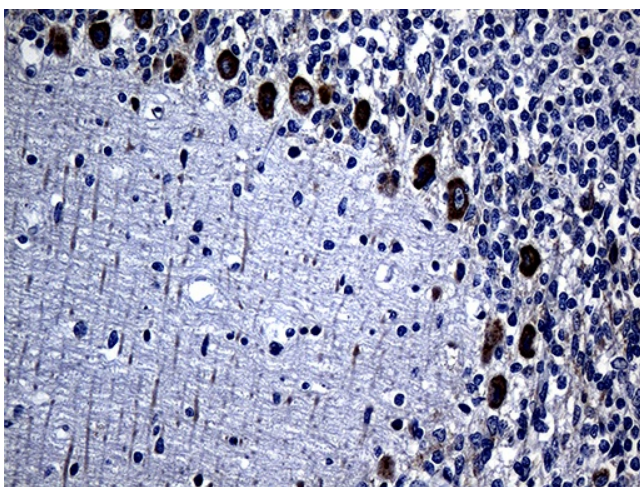
#### Product data:

Product Type:	Primary Antibodies
Clone Name:	OTI4D7
Applications:	IHC, WB
Recommended Dilution:	WB 1:2000, IHC 1:150
Reactivity:	Human, Mouse, Rat
Host:	Mouse
Isotype:	IgG2a
Clonality:	Monoclonal
Immunogen:	Full length human recombinant protein of human MMGT1 (NP_775741) produced in E.coli.
Formulation:	PBS (pH 7.3) containing 1% BSA, 50% glycerol and 0.02% sodium azide.
Concentration:	1 mg/ml
Purification:	Purified from mouse ascites fluids or tissue culture supernatant by affinity chromatography (protein A/G)
Conjugation:	Unconjugated
Storage:	Store at -20°C as received.
Stability:	Stable for 12 months from date of receipt.
Predicted Protein Size:	14.5 kDa
Gene Name:	membrane magnesium transporter 1
Database Link:	<a href="#">NP_775741</a> <a href="#">Entrez Gene 93380 Human</a> <a href="#">Q8N4V1</a>
Synonyms:	EMC5; TMEM32
Protein Families:	Transmembrane


[View online »](#)

**Product images:**


HEK293T cells were transfected with the pCMV6-ENTRY control (Cat# [PS100001], Left lane) or pCMV6-ENTRY MMGT1 (Cat# [RC207046], Right lane) cDNA for 48 hrs and lysed. Equivalent amounts of cell lysates (5 ug per lane) were separated by SDS-PAGE and immunoblotted with anti-MMGT1 (Cat# [TA811106])(1:2000). Positive lysates [LY406623] (100ug) and [LC406623] (20ug) can be purchased separately from OriGene.



Immunohistochemical staining of paraffin-embedded Human embryonic cerebellum within the normal limits using anti-MMGT1 mouse monoclonal antibody. Heat-induced epitope retrieval by EDTA solution buffer pH 8.0 at 120°C for 3 min.