

## Product datasheet for **TA811103**

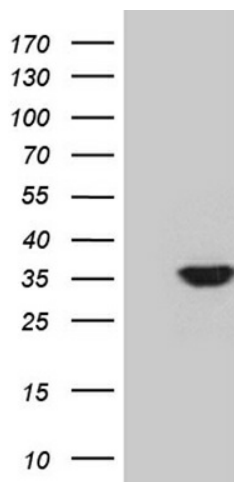
### **PDIK1L Mouse Monoclonal Antibody [Clone ID: OTI2D11]**

#### **Product data:**

Product Type:	Primary Antibodies
Clone Name:	OTI2D11
Applications:	WB
Recommended Dilution:	WB 1:2000
Reactivity:	Human, Mouse, Rat
Host:	Mouse
Isotype:	IgG1
Clonality:	Monoclonal
Immunogen:	Human recombinant protein fragment corresponding to amino acids 131-341 of human PDIK1L (NP_690048) produced in E.coli.
Formulation:	PBS (pH 7.3) containing 1% BSA, 50% glycerol and 0.02% sodium azide.
Concentration:	1 mg/ml
Purification:	Purified from mouse ascites fluids or tissue culture supernatant by affinity chromatography (protein A/G)
Conjugation:	Unconjugated
Storage:	Store at -20°C as received.
Stability:	Stable for 12 months from date of receipt.
Predicted Protein Size:	38.4 kDa
Gene Name:	PDLIM1 interacting kinase 1 like
Database Link:	<a href="#">NP_690048</a> <a href="#">Entrez Gene 230809 Mouse</a> <a href="#">Entrez Gene 313609 Rat</a> <a href="#">Entrez Gene 149420 Human</a> <a href="#">Q8N165</a>
Synonyms:	CLIK1L; STK35L2
Protein Families:	Druggable Genome, Protein Kinase



[View online »](#)

**Product images:**

HEK293T cells were transfected with the pCMV6-ENTRY control (Left lane) or pCMV6-ENTRY PDIK1L ([RC205597], Right lane) cDNA for 48 hrs and lysed. Equivalent amounts of cell lysates (5 ug per lane) were separated by SDS-PAGE and immunoblotted with anti-PDIK1L (1:2000). Positive lysates [LY407293] (100ug) and [LC407293] (20ug) can be purchased separately from OriGene.