

## Product datasheet for **TA811097AM**

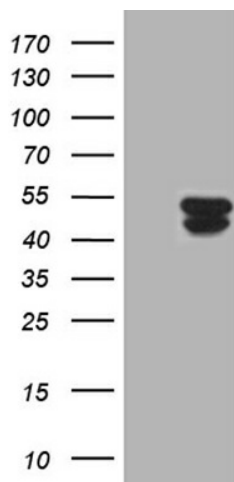
### **KRT31 Mouse Monoclonal Antibody (Biotin conjugated) [Clone ID: OTI2C3]**

#### **Product data:**

Product Type:	Primary Antibodies
Clone Name:	OTI2C3
Applications:	WB
Recommended Dilution:	WB 1:2000
Reactivity:	Human, Mouse, Rat
Host:	Mouse
Isotype:	IgG1
Clonality:	Monoclonal
Immunogen:	Full length human recombinant protein of human KRT31 (NP_002268) produced in E.coli.
Formulation:	PBS (pH 7.3) containing 1% BSA, 50% glycerol and 0.02% sodium azide.
Concentration:	0.5 mg/ml
Purification:	Purified from mouse ascites fluids or tissue culture supernatant by affinity chromatography (protein A/G)
Conjugation:	Biotin
Storage:	Store at -20°C as received.
Stability:	Stable for 12 months from date of receipt.
Predicted Protein Size:	47.1 kDa
Gene Name:	keratin 31
Database Link:	<a href="#">NP_002268</a> <a href="#">Entrez Gene 16660 Mouse</a> <a href="#">Entrez Gene 450228 Rat</a> <a href="#">Entrez Gene 3881 Human Q15323</a>
Background:	The protein encoded by this gene is a member of the keratin gene family. As a type I hair keratin, it is an acidic protein which heterodimerizes with type II keratins to form hair and nails. The type I hair keratins are clustered in a region of chromosome 17q12-q21 and have the same direction of transcription. [provided by RefSeq, Jul 2008]
Synonyms:	Ha-1; HA1; hHa1; KRTHA1



[View online »](#)

**Product images:**

HEK293T cells were transfected with the pCMV6-ENTRY control (Cat# [PS100001], Left lane) or pCMV6-ENTRY KRT31 (Cat# [RC212623], Right lane) cDNA for 48 hrs and lysed. Equivalent amounts of cell lysates (5 ug per lane) were separated by SDS-PAGE and immunoblotted with anti-KRT31(Cat# [TA811097]). Positive lysates [LY419429] (100ug) and [LC419429] (20ug) can be purchased separately from OriGene.