

## Product datasheet for **TA811095M**

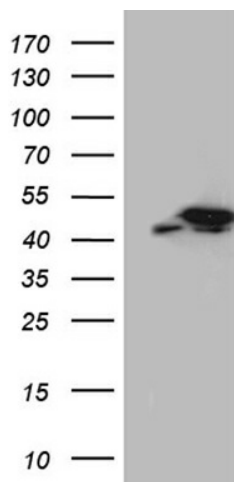
### **TXNL2 (GLRX3) Mouse Monoclonal Antibody [Clone ID: OTI2F2]**

#### **Product data:**

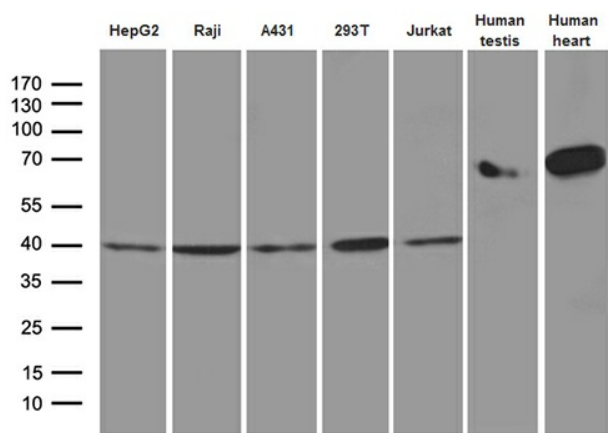
Product Type:	Primary Antibodies
Clone Name:	OTI2F2
Applications:	WB
Recommended Dilution:	WB 1:500~2000
Reactivity:	Human, Mouse, Rat
Host:	Mouse
Isotype:	IgG2a
Clonality:	Monoclonal
Immunogen:	Full length human recombinant protein of human GLRX3 (NP_006532) produced in HEK293T cell.
Formulation:	PBS (pH 7.3) containing 1% BSA, 50% glycerol and 0.02% sodium azide.
Concentration:	1 mg/ml
Purification:	Purified from mouse ascites fluids or tissue culture supernatant by affinity chromatography (protein A/G)
Conjugation:	Unconjugated
Storage:	Store at -20°C as received.
Stability:	Stable for 12 months from date of receipt.
Predicted Protein Size:	37.3 kDa
Gene Name:	glutaredoxin 3
Database Link:	<a href="#">NP_006532</a> <a href="#">Entrez Gene 10539 Human</a> <a href="#">O76003</a>
Synonyms:	GLRX4; GRX3; GRX4; PICOT; TXNL2; TXNL3
Protein Families:	Druggable Genome

[View online »](#)

## Product images:



HEK293T cells were transfected with the pCMV6-ENTRY control (Left lane) or pCMV6-ENTRY GLRX3 ([RC202731], Right lane) cDNA for 48 hrs and lysed. Equivalent amounts of cell lysates (5 ug per lane) were separated by SDS-PAGE and immunoblotted with anti-GLRX3 (1:2000). Positive lysates [LY401960] (100ug) and [LC401960] (20ug) can be purchased separately from OriGene.



Western blot analysis of extracts (35ug) from 5 different cell lines and 2 different tissue lysates by using anti-GLRX3 monoclonal antibody (1:500).