

Product datasheet for **TA811091**

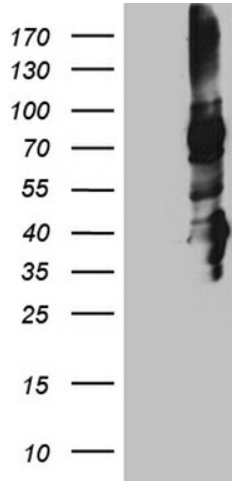
Syntaxin 3 (STX3) Mouse Monoclonal Antibody [Clone ID: OTI5D10]

Product data:

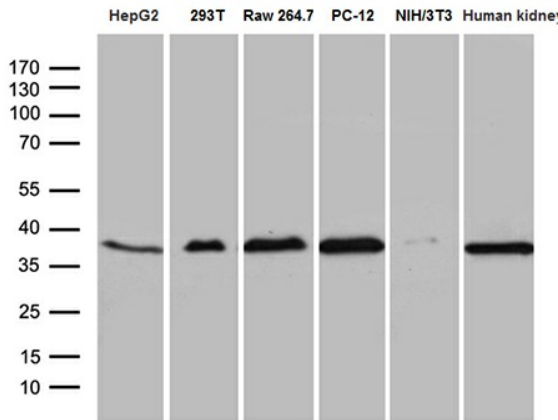
| | |
|-------------------------|---|
| Product Type: | Primary Antibodies |
| Clone Name: | OTI5D10 |
| Applications: | WB |
| Recommended Dilution: | WB 1:500~2000 |
| Reactivity: | Human, Rat, Mouse |
| Host: | Mouse |
| Isotype: | IgG1 |
| Clonality: | Monoclonal |
| Immunogen: | Full length human recombinant protein of human STX3 (NP_004168) produced in HEK293T cell. |
| Formulation: | PBS (pH 7.3) containing 1% BSA, 50% glycerol and 0.02% sodium azide. |
| Concentration: | 1 mg/ml |
| Purification: | Purified from mouse ascites fluids or tissue culture supernatant by affinity chromatography (protein A/G) |
| Conjugation: | Unconjugated |
| Storage: | Store at -20°C as received. |
| Stability: | Stable for 12 months from date of receipt. |
| Predicted Protein Size: | 33 kDa |
| Gene Name: | syntaxin 3 |
| Database Link: | NP_004168 Entrez Gene 20908 Mouse Entrez Gene 81802 Rat Entrez Gene 6809 Human Q13277 |
| Synonyms: | STX3A |
| Protein Families: | Druggable Genome, Stem cell - Pluripotency, Transmembrane |
| Protein Pathways: | SNARE interactions in vesicular transport |



[View online »](#)

Product images:


HEK293T cells were transfected with the pCMV6-ENTRY control (Left lane) or pCMV6-ENTRY STX3 ([RC200658], Right lane) cDNA for 48 hrs and lysed. Equivalent amounts of cell lysates (5 ug per lane) were separated by SDS-PAGE and immunoblotted with anti-STX3 (1:2000). Positive lysates [LY418166] (100ug) and [LC418166] (20ug) can be purchased separately from OriGene.



Western blot analysis of extracts (35ug) from 5 different cell lines and human kidney tissue lysate by using anti-STX3 monoclonal antibody (1:500).