

## Product datasheet for **TA811090S**

### **NABP1 Mouse Monoclonal Antibody [Clone ID: OTI8E3]**

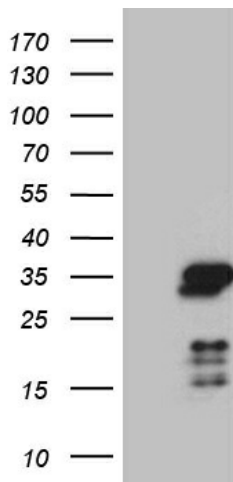
#### **Product data:**

Product Type:	Primary Antibodies
Clone Name:	OTI8E3
Applications:	WB
Recommended Dilution:	WB 1:500~2000
Reactivity:	Human, Dog, Rat, Monkey, Mouse
Host:	Mouse
Isotype:	IgG2b
Clonality:	Monoclonal
Immunogen:	Full length human recombinant protein of human NABP1 (NP_001026886) produced in E.coli.
Formulation:	PBS (pH 7.3) containing 1% BSA, 50% glycerol and 0.02% sodium azide.
Concentration:	1 mg/ml
Purification:	Purified from mouse ascites fluids or tissue culture supernatant by affinity chromatography (protein A/G)
Conjugation:	Unconjugated
Storage:	Store at -20°C as received.
Stability:	Stable for 12 months from date of receipt.
Predicted Protein Size:	22.2 kDa
Gene Name:	nucleic acid binding protein 1
Database Link:	<a href="#">NP_001026886</a> <a href="#">Entrez Gene 109019 Mouse</a> <a href="#">Entrez Gene 363227 Rat</a> <a href="#">Entrez Gene 478847 Dog</a> <a href="#">Entrez Gene 694172 Monkey</a> <a href="#">Entrez Gene 64859 Human</a> <a href="#">Q96AH0</a>
Synonyms:	OBFC2A; SOSS-B2; SSB2

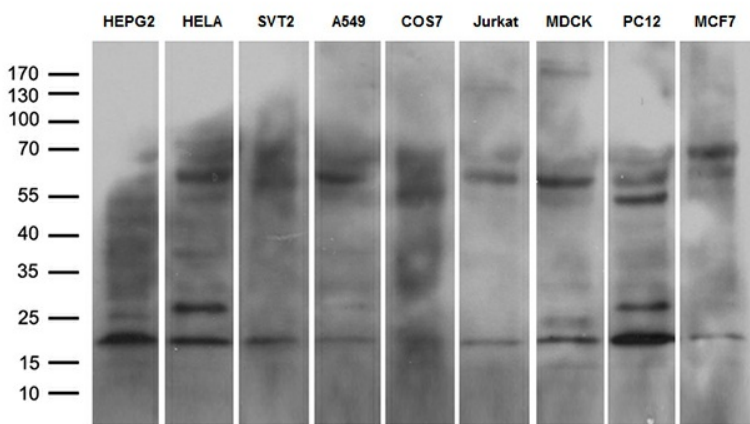


[View online »](#)

**Product images:**



HEK293T cells were transfected with the pCMV6-ENTRY control (Left lane) or pCMV6-ENTRY NABP1 ([RC203672], Right lane) cDNA for 48 hrs and lysed. Equivalent amounts of cell lysates (5 ug per lane) were separated by SDS-PAGE and immunoblotted with anti-NABP1 (1:2000). Positive lysates [LY422167] (100ug) and [LC422167] (20ug) can be purchased separately from OriGene.



Western blot analysis of extracts (35ug) from 9 different cell lines by using anti-NABP1 monoclonal antibody (1:500).