

Product datasheet for **TA811082AM**

SPATA46 Mouse Monoclonal Antibody (Biotin conjugated) [Clone ID: OTI1H3]

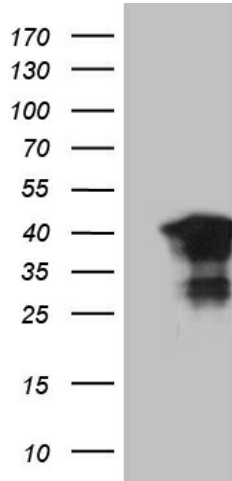
Product data:

| | |
|-------------------------|---|
| Product Type: | Primary Antibodies |
| Clone Name: | OTI1H3 |
| Applications: | WB |
| Recommended Dilution: | WB 1:500~2000 |
| Reactivity: | Human |
| Host: | Mouse |
| Isotype: | IgG1 |
| Clonality: | Monoclonal |
| Immunogen: | Full length human recombinant protein of human C1ORF111 (NP_872387) produced in E.coli. |
| Formulation: | PBS (pH 7.3) containing 1% BSA, 50% glycerol and 0.02% sodium azide. |
| Concentration: | 0.5 mg/ml |
| Purification: | Purified from mouse ascites fluids or tissue culture supernatant by affinity chromatography (protein A/G) |
| Conjugation: | Biotin |
| Storage: | Store at -20°C as received. |
| Stability: | Stable for 12 months from date of receipt. |
| Predicted Protein Size: | 29 kDa |
| Gene Name: | chromosome 1 open reading frame 111 |
| Database Link: | NP_872387 Entrez Gene 284680 Human Q5T0L3 |
| Synonyms: | HSD20 |

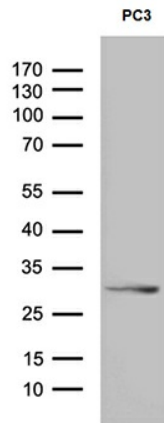


[View online »](#)

Product images:



HEK293T cells were transfected with the pCMV6-ENTRY control (Left lane) or pCMV6-ENTRY C1orf111 ([RC206227], Right lane) cDNA for 48 hrs and lysed. Equivalent amounts of cell lysates (5 ug per lane) were separated by SDS-PAGE and immunoblotted with anti-C1orf111 (1:2000). Positive lysates [LY405470] (100ug) and [LC405470] (20ug) can be purchased separately from OriGene.



Western blot analysis of extracts (35ug) from PC3 cell line by using anti-C1orf111 monoclonal antibody (1:500).