

Product datasheet for TA811077M

CIB3 Mouse Monoclonal Antibody [Clone ID: OTI5F12]

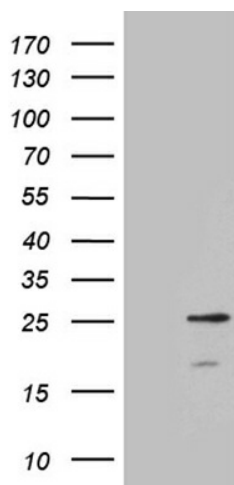
Product data:

| | |
|-------------------------|---|
| Product Type: | Primary Antibodies |
| Clone Name: | OTI5F12 |
| Applications: | WB |
| Recommended Dilution: | WB 1:500 |
| Reactivity: | Human, Mouse, Rat |
| Host: | Mouse |
| Isotype: | IgG1 |
| Clonality: | Monoclonal |
| Immunogen: | Full length human recombinant protein of human CIB3 (NP_473454) produced in E.coli. |
| Formulation: | PBS (pH 7.3) containing 1% BSA, 50% glycerol and 0.02% sodium azide. |
| Concentration: | 1 mg/ml |
| Purification: | Purified from mouse ascites fluids or tissue culture supernatant by affinity chromatography (protein A/G) |
| Conjugation: | Unconjugated |
| Storage: | Store at -20°C as received. |
| Stability: | Stable for 12 months from date of receipt. |
| Predicted Protein Size: | 21.6 kDa |
| Gene Name: | calcium and integrin binding family member 3 |
| Database Link: | NP_473454 Entrez Gene 234421 Mouse Entrez Gene 685723 Rat Entrez Gene 117286 Human Q96Q77 |
| Background: | This gene product shares a high degree of sequence similarity with DNA-dependent protein kinase catalytic subunit-interacting protein 2 in human and mouse, and like them may bind the catalytic subunit of DNA-dependent protein kinases. The exact function of this gene is not known. Alternative splicing results in multiple transcript variants. [provided by RefSeq, Jul 2014] |
| Synonyms: | KIP3 |


[View online »](#)

Protein Families: Druggable Genome

Product images:



HEK293T cells were transfected with the pCMV6-ENTRY control (Cat# [PS100001], Left lane) or pCMV6-ENTRY CIB3 (Cat# [RC216582], Right lane) cDNA for 48 hrs and lysed. Equivalent amounts of cell lysates (5 ug per lane) were separated by SDS-PAGE and immunoblotted with anti-CIB3 (Cat# [TA811077]). Positive lysates [LY409288] (100ug) and [LC409288] (20ug) can be purchased separately from OriGene.