

## Product datasheet for **TA811077AM**

### **CIB3 Mouse Monoclonal Antibody (Biotin conjugated) [Clone ID: OTI5F12]**

#### **Product data:**

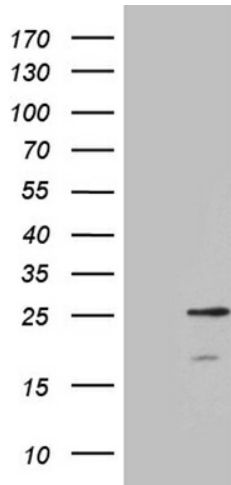
Product Type:	Primary Antibodies
Clone Name:	OTI5F12
Applications:	WB
Recommended Dilution:	WB 1:500
Reactivity:	Human, Mouse, Rat
Host:	Mouse
Isotype:	IgG1
Clonality:	Monoclonal
Immunogen:	Full length human recombinant protein of human CIB3 (NP_473454) produced in E.coli.
Formulation:	PBS (pH 7.3) containing 1% BSA, 50% glycerol and 0.02% sodium azide.
Concentration:	0.5 mg/ml
Purification:	Purified from mouse ascites fluids or tissue culture supernatant by affinity chromatography (protein A/G)
Conjugation:	Biotin
Storage:	Store at -20°C as received.
Stability:	Stable for 12 months from date of receipt.
Predicted Protein Size:	21.6 kDa
Gene Name:	calcium and integrin binding family member 3
Database Link:	<a href="#">NP_473454</a> <a href="#">Entrez Gene 234421 Mouse</a> <a href="#">Entrez Gene 685723 Rat</a> <a href="#">Entrez Gene 117286 Human</a> <a href="#">Q96Q77</a>
Background:	This gene product shares a high degree of sequence similarity with DNA-dependent protein kinase catalytic subunit-interacting protein 2 in human and mouse, and like them may bind the catalytic subunit of DNA-dependent protein kinases. The exact function of this gene is not known. Alternative splicing results in multiple transcript variants. [provided by RefSeq, Jul 2014]
Synonyms:	KIP3



[View online »](#)

Protein Families: Druggable Genome

### Product images:



HEK293T cells were transfected with the pCMV6-ENTRY control (Cat# [PS100001], Left lane) or pCMV6-ENTRY CIB3 (Cat# [RC216582], Right lane) cDNA for 48 hrs and lysed. Equivalent amounts of cell lysates (5 ug per lane) were separated by SDS-PAGE and immunoblotted with anti-CIB3 (Cat# [TA811077]). Positive lysates [LY409288] (100ug) and [LC409288] (20ug) can be purchased separately from OriGene.