

Product datasheet for **TA811056S**

TXNL2 (GLRX3) Mouse Monoclonal Antibody [Clone ID: OTI2B10]

Product data:

Product Type:	Primary Antibodies
Clone Name:	OTI2B10
Applications:	WB
Recommended Dilution:	WB 1:500~2000
Reactivity:	Human, Mouse, Rat
Host:	Mouse
Isotype:	IgG2a
Clonality:	Monoclonal
Immunogen:	Full length human recombinant protein of human GLRX3 (NP_006532) produced in HEK293T cell.
Formulation:	PBS (pH 7.3) containing 1% BSA, 50% glycerol and 0.02% sodium azide.
Concentration:	1 mg/ml
Purification:	Purified from mouse ascites fluids or tissue culture supernatant by affinity chromatography (protein A/G)
Conjugation:	Unconjugated
Storage:	Store at -20°C as received.
Stability:	Stable for 12 months from date of receipt.
Predicted Protein Size:	37.3 kDa
Gene Name:	glutaredoxin 3
Database Link:	NP_006532 Entrez Gene 10539 Human O76003



[View online »](#)

Background:

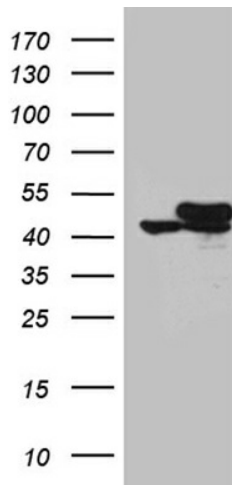
This gene encodes a member of the glutaredoxin family. Glutaredoxins are oxidoreductase enzymes that reduce a variety of substrates using glutathione as a cofactor. The encoded protein binds to and modulates the function of protein kinase C theta. The encoded protein may also inhibit apoptosis and play a role in cellular growth, and the expression of this gene may be a marker for cancer. Pseudogenes of this gene are located on the short arm of chromosomes 6 and 9. Alternatively spliced transcript variants have been observed for this gene. [provided by RefSeq, Dec 2010]

Synonyms:

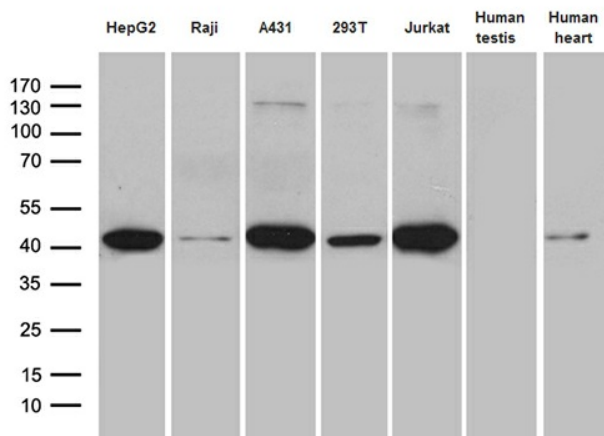
GLRX4; GRX3; GRX4; PICOT; TXNL2; TXNL3

Protein Families:

Druggable Genome

Product images:


HEK293T cells were transfected with the pCMV6-ENTRY control (Left lane) or pCMV6-ENTRY GLRX3 ([RC202731], Right lane) cDNA for 48 hrs and lysed. Equivalent amounts of cell lysates (5 ug per lane) were separated by SDS-PAGE and immunoblotted with anti-GLRX3. Positive lysates [LY401960] (100ug) and [LC401960] (20ug) can be purchased separately from OriGene.



Western blot analysis of extracts (35ug) from 5 cell lines and 2 tissue lysates by using anti-GLRX3 monoclonal antibody (1:500).