

## Product datasheet for **TA811047M**

### PX19 (PRELID1) Mouse Monoclonal Antibody [Clone ID: OTI2A6]

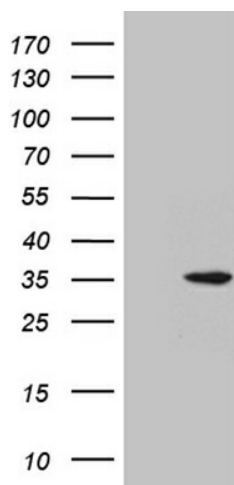
#### Product data:

Product Type:	Primary Antibodies
Clone Name:	OTI2A6
Applications:	IHC, WB
Recommended Dilution:	WB 1:2000, IHC 1:500
Reactivity:	Human, Mouse, Rat
Host:	Mouse
Isotype:	IgG2b
Clonality:	Monoclonal
Immunogen:	Human recombinant protein fragment corresponding to amino acids 36-219 of human PRELID1 (NP_037369) produced in E.coli.
Formulation:	PBS (pH 7.3) containing 1% BSA, 50% glycerol and 0.02% sodium azide.
Concentration:	1 mg/ml
Purification:	Purified from mouse ascites fluids or tissue culture supernatant by affinity chromatography (protein A/G)
Conjugation:	Unconjugated
Storage:	Store at -20°C as received.
Stability:	Stable for 12 months from date of receipt.
Predicted Protein Size:	25 kDa
Gene Name:	PRELI domain containing 1
Database Link:	<a href="#">NP_037369</a> <a href="#">Entrez Gene 27166 Human</a> <a href="#">Q9Y255</a>
Background:	This gene encodes a member of the late embryogenesis abundant motif-containing protein family. The encoded protein is localized to mitochondria and may function as a cytoprotectant by regulating cell death and differentiation. Alternative splicing results in multiple transcript variants encoding different isoforms. Several related pseudogenes have been identified. [provided by RefSeq, Nov 2012]

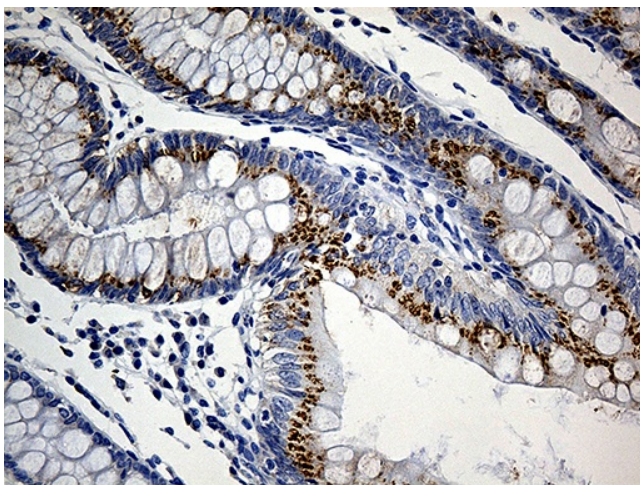
[View online »](#)

**Synonyms:** CGI-106; PRELI; PX19; SBBI12

**Product images:**



HEK293T cells were transfected with the pCMV6-ENTRY control (Cat# [PS100001], Left lane) or pCMV6-ENTRY PRELID1 (Cat# [RC202303], Right lane) cDNA for 48 hrs and lysed. Equivalent amounts of cell lysates (5 ug per lane) were separated by SDS-PAGE and immunoblotted with anti-PRELID1 antibody (Cat# [TA811047]). Positive lysates [LY415724] (100ug) and [LC415724] (20ug) can be purchased separately from OriGene.



Immunohistochemical staining of paraffin-embedded Adenocarcinoma of Human colon tissue using anti-PRELID1 mouse monoclonal antibody. Heat-induced epitope retrieval by EDTA solution buffer pH 8.0 at 120°C for 3 min.