

## Product datasheet for **TA811045M**

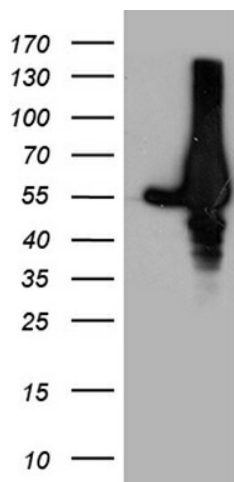
### GDI1 Mouse Monoclonal Antibody [Clone ID: OTI8B2]

#### Product data:

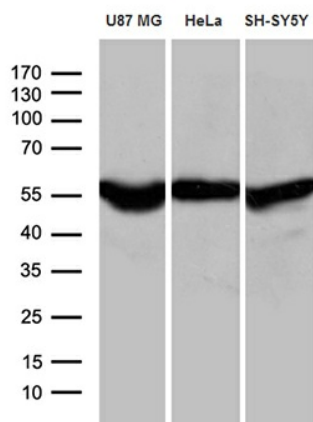
Product Type:	Primary Antibodies
Clone Name:	OTI8B2
Applications:	WB
Recommended Dilution:	WB 1:500~2000
Reactivity:	Human, Mouse, Rat
Host:	Mouse
Isotype:	IgG1
Clonality:	Monoclonal
Immunogen:	Full length human recombinant protein of human GDI1 (NP_001484) produced in HEK293T cell.
Formulation:	PBS (pH 7.3) containing 1% BSA, 50% glycerol and 0.02% sodium azide.
Concentration:	1 mg/ml
Purification:	Purified from mouse ascites fluids or tissue culture supernatant by affinity chromatography (protein A/G)
Conjugation:	Unconjugated
Storage:	Store at -20°C as received.
Stability:	Stable for 12 months from date of receipt.
Predicted Protein Size:	50.4 kDa
Gene Name:	GDP dissociation inhibitor 1
Database Link:	<a href="#">NP_001484</a> <a href="#">Entrez Gene 14567 Mouse</a> <a href="#">Entrez Gene 25183 Rat</a> <a href="#">Entrez Gene 2664 Human</a> <a href="#">P31150</a>
Synonyms:	1A; GDIL; MRX41; MRX48; OPHN2; RABGD1A; RABGDIA; XAP-4
Protein Families:	Druggable Genome


[View online »](#)

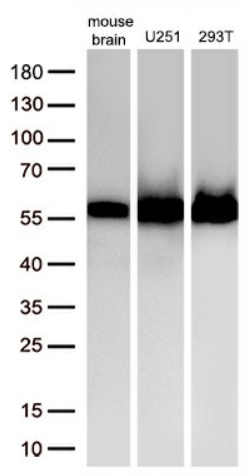
## Product images:



HEK293T cells were transfected with the pCMV6-ENTRY control (Left lane) or pCMV6-ENTRY GDI1 ([RC203824], Right lane) cDNA for 48 hrs and lysed. Equivalent amounts of cell lysates (5 ug per lane) were separated by SDS-PAGE and immunoblotted with anti-GDI1 (1:2000). Positive lysates [LY419896] (100ug) and [LC419896] (20ug) can be purchased separately from OriGene.



Western blot analysis of extracts (35ug) from 3 different cell lines by using anti-GDI1 monoclonal antibody (1:500).



Western blot analysis of extracts (50ug per lane) from 2 different cell lines and 1 tissue lysates by using anti-GDI1 antibody ([TA811045], 1:3000; 1mg/ml).