

Product datasheet for TA811044

GDI1 Mouse Monoclonal Antibody [Clone ID: OTI8A3]

Product data:

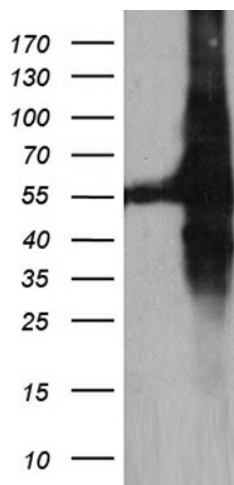
Product Type:	Primary Antibodies
Clone Name:	OTI8A3
Applications:	IHC, WB
Recommended Dilution:	WB 1:500~2000, IHC 1:2000
Reactivity:	Human, Mouse, Rat
Host:	Mouse
Isotype:	IgG1
Clonality:	Monoclonal
Immunogen:	Full length human recombinant protein of human GDI1 (NP_001484) produced in HEK293T cell.
Formulation:	PBS (pH 7.3) containing 1% BSA, 50% glycerol and 0.02% sodium azide.
Concentration:	1 mg/ml
Purification:	Purified from mouse ascites fluids or tissue culture supernatant by affinity chromatography (protein A/G)
Conjugation:	Unconjugated
Storage:	Store at -20°C as received.
Stability:	Stable for 12 months from date of receipt.
Predicted Protein Size:	50.4 kDa
Gene Name:	GDP dissociation inhibitor 1
Database Link:	NP_001484 Entrez Gene 14567 Mouse Entrez Gene 25183 Rat Entrez Gene 2664 Human P31150
Background:	GDP dissociation inhibitors are proteins that regulate the GDP-GTP exchange reaction of members of the rab family, small GTP-binding proteins of the ras superfamily, that are involved in vesicular trafficking of molecules between cellular organelles. GDIs slow the rate of dissociation of GDP from rab proteins and release GDP from membrane-bound rabs. GDI1 is expressed primarily in neural and sensory tissues. Mutations in GDI1 have been linked to X-linked nonspecific mental retardation. [provided by RefSeq, Jul 2008]


[View online »](#)

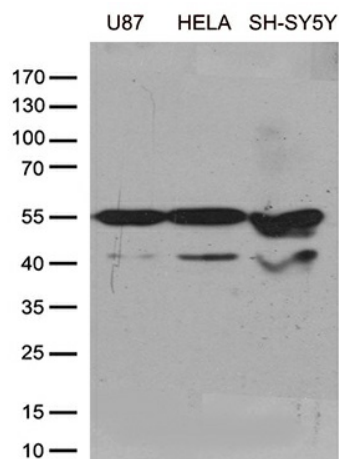
Synonyms: 1A; GDIL; MRX41; MRX48; OPHN2; RABGD1A; RABGDIA; XAP-4

Protein Families: Druggable Genome

Product images:



HEK293T cells were transfected with the pCMV6-ENTRY control (Cat# [PS100001], Left lane) or pCMV6-ENTRY GDI1 (Cat# [RC203824], Right lane) cDNA for 48 hrs and lysed. Equivalent amounts of cell lysates (5 ug per lane) were separated by SDS-PAGE and immunoblotted with anti-GDI1 (Cat# TA811044). Positive lysates [LY419896] (100ug) and [LC419896] (20ug) can be purchased separately from OriGene.



Western blot analysis of extracts (35ug) from cell lines and/or tissue lysates by using anti-GDI1 monoclonal antibody (1:500).



Immunohistochemical staining of paraffin-embedded Human adult brain tissue within the normal limits using anti-GDI1 mouse monoclonal antibody. (Heat-induced epitope retrieval by 1mM EDTA in 10mM Tris buffer (pH8.5) at 120°C for 3min, TA811044) (1:2000)