

## Product datasheet for **TA811040AM**

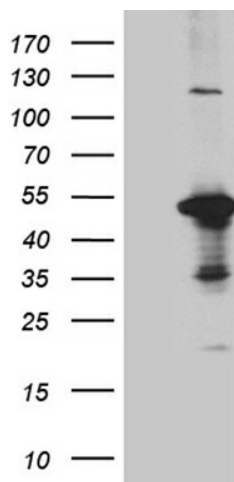
### DUSP5 Mouse Monoclonal Antibody (Biotin conjugated) [Clone ID: OTI1G2]

#### Product data:

Product Type:	Primary Antibodies
Clone Name:	OTI1G2
Applications:	WB
Recommended Dilution:	WB 1:2000
Reactivity:	Human, Mouse, Rat
Host:	Mouse
Isotype:	IgG2b
Clonality:	Monoclonal
Immunogen:	Human recombinant protein fragment corresponding to amino acids 125-384 of human DUSP5 (NP_004410) produced in E.coli.
Formulation:	PBS (pH 7.3) containing 1% BSA, 50% glycerol and 0.02% sodium azide.
Concentration:	0.5 mg/ml
Purification:	Purified from mouse ascites fluids or tissue culture supernatant by affinity chromatography (protein A/G)
Conjugation:	Biotin
Storage:	Store at -20°C as received.
Stability:	Stable for 12 months from date of receipt.
Predicted Protein Size:	41.9 kDa
Gene Name:	dual specificity phosphatase 5
Database Link:	<a href="#">NP_004410</a> <a href="#">Entrez Gene 171109 Rat</a> <a href="#">Entrez Gene 240672 Mouse</a> <a href="#">Entrez Gene 1847 Human</a> <a href="#">Q16690</a>
Synonyms:	DUSP; HVH3
Protein Families:	Phosphatase
Protein Pathways:	MAPK signaling pathway



[View online »](#)

**Product images:**

HEK293T cells were transfected with the pCMV6-ENTRY control (Left lane) or pCMV6-ENTRY DUSP5 ([RC209128], Right lane) cDNA for 48 hrs and lysed. Equivalent amounts of cell lysates (5 ug per lane) were separated by SDS-PAGE and immunoblotted with anti-DUSP5 (1:2000). Positive lysates [LY417998] (100ug) and [LC417998] (20ug) can be purchased separately from OriGene.