

Product datasheet for **TA811037AM**

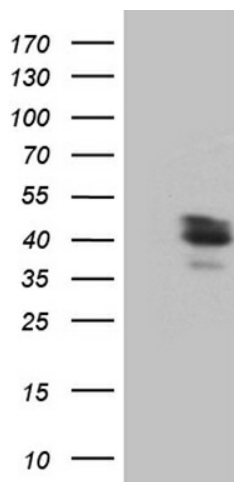
BRMS1L Mouse Monoclonal Antibody (Biotin conjugated) [Clone ID: OTI9A3]

Product data:

Product Type:	Primary Antibodies
Clone Name:	OTI9A3
Applications:	WB
Recommended Dilution:	WB 1:500
Reactivity:	Human, Mouse, Rat
Host:	Mouse
Isotype:	IgG1
Clonality:	Monoclonal
Immunogen:	Full length human recombinant protein of human BRMS1L (NP_115728) produced in E.coli.
Formulation:	PBS (pH 7.3) containing 1% BSA, 50% glycerol and 0.02% sodium azide.
Concentration:	0.5 mg/ml
Purification:	Purified from mouse ascites fluids or tissue culture supernatant by affinity chromatography (protein A/G)
Conjugation:	Biotin
Storage:	Store at -20°C as received.
Stability:	Stable for 12 months from date of receipt.
Predicted Protein Size:	37.4 kDa
Gene Name:	breast cancer metastasis-suppressor 1-like
Database Link:	NP_115728 Entrez Gene 52592 Mouse Entrez Gene 299053 Rat Entrez Gene 84312 Human Q5PSV4
Background:	The protein encoded by this gene shows sequence similarity to the human breast carcinoma metastasis suppressor (BRMS1) protein and the mammalian Sds3 (suppressor of defective silencing 3) proteins. This protein is a component of the mSin3a family of histone deacetylase complexes (HDAC). [provided by RefSeq, Jul 2008]
Synonyms:	BRMS1
Protein Families:	Druggable Genome



[View online »](#)

Product images:

HEK293T cells were transfected with the pCMV6-ENTRY control (Cat# [PS100001], Left lane) or pCMV6-ENTRY BRMS1L (Cat# [RC202645], Right lane) cDNA for 48 hrs and lysed. Equivalent amounts of cell lysates (5 ug per lane) were separated by SDS-PAGE and immunoblotted with anti-BRMS1L (Cat# [TA811037]). Positive lysates [LY410189] (100ug) and [LC410189] (20ug) can be purchased separately from OriGene.