

## Product datasheet for TA811000S

### beta Actin (ACTB) Mouse Monoclonal Antibody [Clone ID: OTI1]

#### Product data:

|                         |  |
|-------------------------|--|
| Product Type:           | Primary Antibodies   |
| Clone Name:             | OTI1   |
| Applications:           | WB   |
| Recommended Dilution:   | WB 1:2000  |
| Reactivity:             | Human, Monkey, Mouse, Rat, Dog   |
| Host:                   | Mouse  |
| Isotype:                | IgG3   |
| Clonality:              | Monoclonal   |
| Immunogen:              | Synthetic peptide corresponding to the N terminal of human beta-actin conjugated to KLH.   |
| Formulation:            | PBS (PH 7.3) containing 1% BSA, 50% glycerol and 0.02% sodium azide.   |
| Concentration:          | 1 mg/ml  |
| Purification:           | Purified from mouse ascites fluids or tissue culture supernatant by affinity chromatography (protein A/G)  |
| Conjugation:            | Unconjugated   |
| Storage:                | Store at -20°C as received.  |
| Stability:              | Stable for 12 months from date of receipt.   |
| Predicted Protein Size: | 41.6 kDa   |
| Gene Name:              | actin, beta  |
| Database Link:          | <a href="#">NP_001092</a><br><a href="#">Entrez Gene 11461 Mouse</a> <a href="#">Entrez Gene 81822 Rat</a> <a href="#">Entrez Gene 403580 Dog</a> <a href="#">Entrez Gene 574285 Monkey</a> <a href="#">Entrez Gene 60 Human</a><br><a href="#">P60709</a> |
| Synonyms:               | BRWS1; PS1TP5BP1   |
| Protein Families:       | ES Cell Differentiation/IPS  |

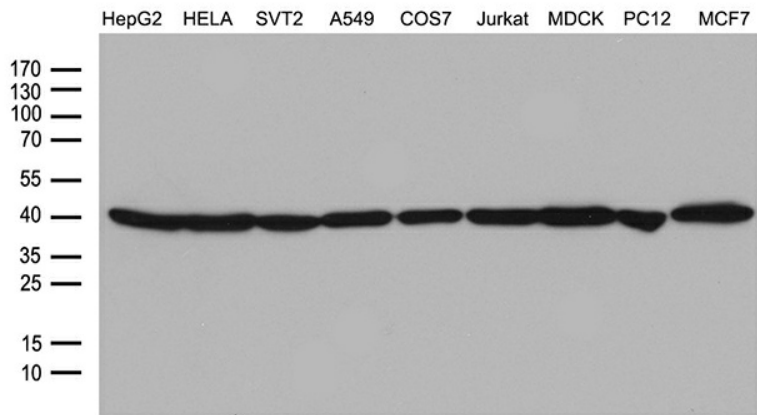


[View online »](#)

**Protein Pathways:**

Adherens junction, Arrhythmogenic right ventricular cardiomyopathy (ARVC), Dilated cardiomyopathy, Focal adhesion, Hypertrophic cardiomyopathy (HCM), Leukocyte transendothelial migration, Pathogenic Escherichia coli infection, Regulation of actin cytoskeleton, Tight junction, Vibrio cholerae infection, Viral myocarditis

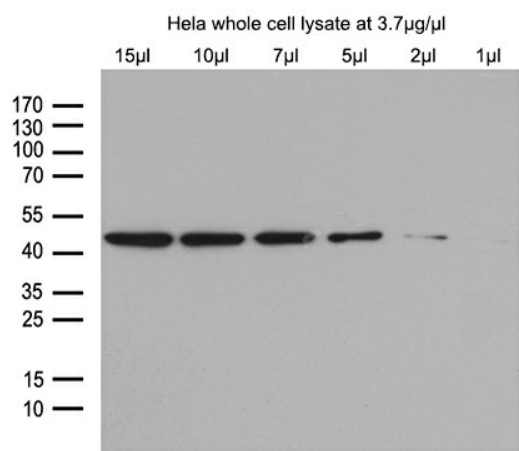
**Product images:**



Western blot analysis of extracts (35ug) from 9 different cell lines by using anti-beta-actin monoclonal antibody (HepG2: human; HeLa: human; SVT2: mouse; A549: human; COS7: monkey; Jurkat: human; MDCK: canine; PC12: rat; MCF7: human) (1:2000).



Western blot analysis of extracts (15ug) from 3 different tissues by using anti-beta-actin monoclonal antibody (1:2000).



Western blot analysis of different amount of Hela cell lysate by using anti-beta-actin monoclonal antibody (1:2000).