

## Product datasheet for **TA811000AM**

### beta Actin (ACTB) Mouse Monoclonal Antibody (Biotin conjugated) [Clone ID: OTI1]

#### Product data:

Product Type:	Primary Antibodies
Clone Name:	OTI1
Applications:	WB
Recommended Dilution:	WB 1:2000
Reactivity:	Human, Monkey, Mouse, Rat, Dog
Host:	Mouse
Isotype:	IgG3
Clonality:	Monoclonal
Immunogen:	Synthetic peptide corresponding to the N terminal of human beta-actin conjugated to KLH.
Formulation:	PBS (PH 7.3) containing 1% BSA, 50% glycerol and 0.02% sodium azide.
Concentration:	0.5 mg/ml
Purification:	Purified from mouse ascites fluids or tissue culture supernatant by affinity chromatography (protein A/G)
Conjugation:	Biotin
Storage:	Store at -20°C as received.
Stability:	Stable for 12 months from date of receipt.
Predicted Protein Size:	41.6 kDa
Gene Name:	actin, beta
Database Link:	<a href="#">NP_001092</a> <a href="#">Entrez Gene 11461 Mouse</a> <a href="#">Entrez Gene 81822 Rat</a> <a href="#">Entrez Gene 403580 Dog</a> <a href="#">Entrez Gene 574285 Monkey</a> <a href="#">Entrez Gene 60 Human</a> <a href="#">P60709</a>
Synonyms:	BRWS1; PS1TP5BP1
Protein Families:	ES Cell Differentiation/IPS

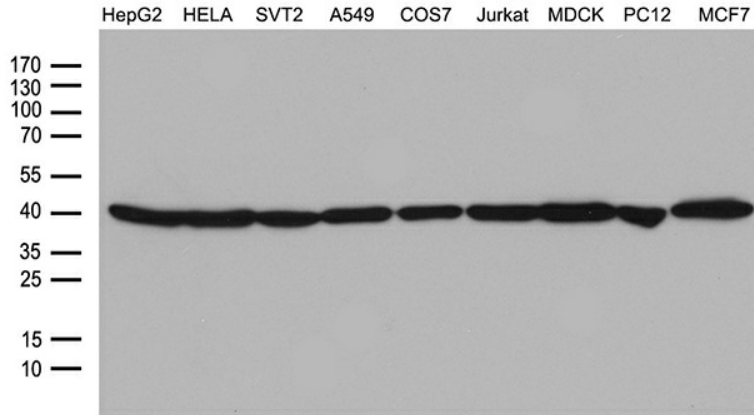


[View online »](#)

**Protein Pathways:**

Adherens junction, Arrhythmogenic right ventricular cardiomyopathy (ARVC), Dilated cardiomyopathy, Focal adhesion, Hypertrophic cardiomyopathy (HCM), Leukocyte transendothelial migration, Pathogenic Escherichia coli infection, Regulation of actin cytoskeleton, Tight junction, Vibrio cholerae infection, Viral myocarditis

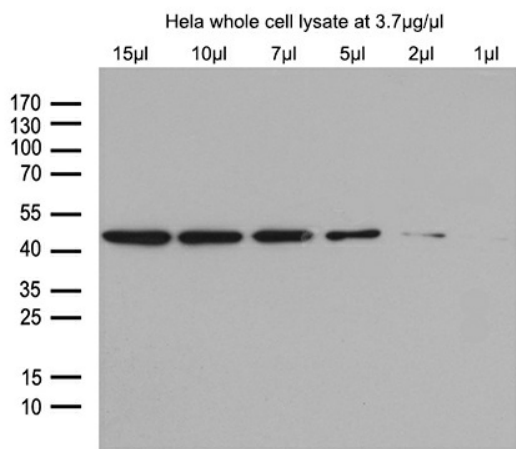
**Product images:**



Western blot analysis of extracts (35ug) from 9 different cell lines by using anti-beta-actin monoclonal antibody (HepG2: human; HeLa: human; SVT2: mouse; A549: human; COS7: monkey; Jurkat: human; MDCK: canine; PC12: rat; MCF7: human) (1:2000).



Western blot analysis of extracts (15ug) from 3 different tissues by using anti-beta-actin monoclonal antibody (1:2000).



Western blot analysis of different amount of HeLa cell lysate by using anti-beta-actin monoclonal antibody (1:2000).