

## Product datasheet for **TA810999BM**

### **FKLF / KLF11 (KLF11) Mouse Monoclonal Antibody (HRP conjugated) [Clone ID: OTI3G4]**

#### **Product data:**

|                                |   |
|--------------------------------|---|
| <b>Product Type:</b>           | Primary Antibodies  |
| <b>Clone Name:</b>             | OTI3G4  |
| <b>Applications:</b>           | WB  |
| <b>Recommended Dilution:</b>   | WB 1:500  |
| <b>Reactivity:</b>             | Human   |
| <b>Host:</b>                   | Mouse   |
| <b>Isotype:</b>                | IgG1  |
| <b>Clonality:</b>              | Monoclonal  |
| <b>Immunogen:</b>              | Human recombinant protein fragment corresponding to amino acids 1-274 of human KLF11 (NP_003588) produced in E.coli.  |
| <b>Formulation:</b>            | PBS (pH 7.3) containing 1% BSA, 50% glycerol.   |
| <b>Concentration:</b>          | 0.5 mg/ml   |
| <b>Purification:</b>           | Purified from mouse ascites fluids or tissue culture supernatant by affinity chromatography (protein A/G)   |
| <b>Conjugation:</b>            | HRP   |
| <b>Storage:</b>                | Store at -20°C as received.   |
| <b>Stability:</b>              | Stable for 12 months from date of receipt.  |
| <b>Predicted Protein Size:</b> | 55 kDa  |
| <b>Gene Name:</b>              | Kruppel-like factor 11  |
| <b>Database Link:</b>          | <a href="#">NP_003588</a><br><a href="#">Entrez Gene 8462 Human</a><br><a href="#">O14901</a>   |
| <b>Background:</b>             | The protein encoded by this gene is a zinc finger transcription factor that binds to SP1-like sequences in epsilon- and gamma-globin gene promoters. This binding inhibits cell growth and causes apoptosis. Defects in this gene are a cause of maturity-onset diabetes of the young type 7 (MODY7). Three transcript variants encoding two different isoforms have been found for this gene. [provided by RefSeq, Apr 2010] |

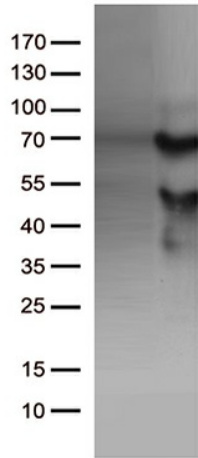


[View online »](#)

Synonyms: FKLF; FKLF1; MODY7; TIEG2; Tieg3

Protein Families: Transcription Factors

### Product images:



HEK293T cells were transfected with the pCMV6-ENTRY control (Left lane) or pCMV6-ENTRY KLF11 ([RC209194], Right lane) cDNA for 48 hrs and lysed. Equivalent amounts of cell lysates (5 ug per lane) were separated by SDS-PAGE and immunoblotted with anti-KLF11 (1:500). Positive lysates [LY418566] (100ug) and [LC418566] (20ug) can be purchased separately from OriGene.