

Product datasheet for **TA810999**

FKLF / KLF11 (KLF11) Mouse Monoclonal Antibody [Clone ID: OTI3G4]

Product data:

Product Type:	Primary Antibodies
Clone Name:	OTI3G4
Applications:	WB
Recommended Dilution:	WB 1:500
Reactivity:	Human
Host:	Mouse
Isotype:	IgG1
Clonality:	Monoclonal
Immunogen:	Human recombinant protein fragment corresponding to amino acids 1-274 of human KLF11 (NP_003588) produced in E.coli.
Formulation:	PBS (pH 7.3) containing 1% BSA, 50% glycerol and 0.02% sodium azide.
Concentration:	1 mg/ml
Purification:	Purified from mouse ascites fluids or tissue culture supernatant by affinity chromatography (protein A/G)
Conjugation:	Unconjugated
Storage:	Store at -20°C as received.
Stability:	Stable for 12 months from date of receipt.
Predicted Protein Size:	55 kDa
Gene Name:	Kruppel-like factor 11
Database Link:	NP_003588 Entrez Gene 8462 Human O14901
Background:	The protein encoded by this gene is a zinc finger transcription factor that binds to SP1-like sequences in epsilon- and gamma-globin gene promoters. This binding inhibits cell growth and causes apoptosis. Defects in this gene are a cause of maturity-onset diabetes of the young type 7 (MODY7). Three transcript variants encoding two different isoforms have been found for this gene. [provided by RefSeq, Apr 2010]

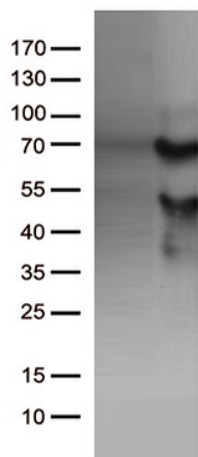


[View online »](#)

Synonyms: FKLF; FKLF1; MODY7; TIEG2; Tieg3

Protein Families: Transcription Factors

Product images:



HEK293T cells were transfected with the pCMV6-ENTRY control (Left lane) or pCMV6-ENTRY KLF11 ([RC209194], Right lane) cDNA for 48 hrs and lysed. Equivalent amounts of cell lysates (5 ug per lane) were separated by SDS-PAGE and immunoblotted with anti-KLF11 (1:500). Positive lysates [LY418566] (100ug) and [LC418566] (20ug) can be purchased separately from OriGene.