

## Product datasheet for **TA810988S**

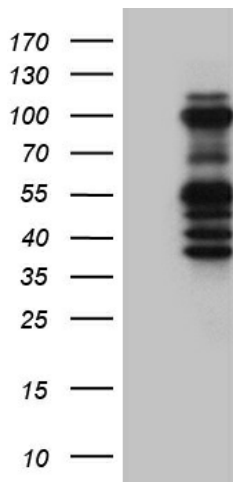
### ASH2L Mouse Monoclonal Antibody [Clone ID: OTI2H3]

#### Product data:

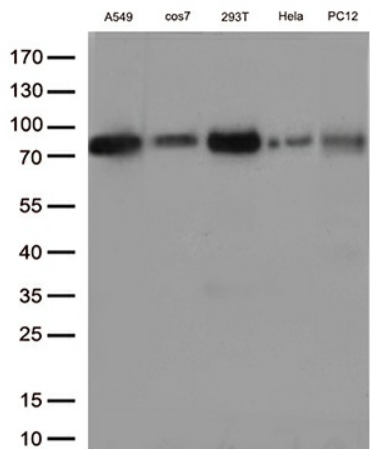
Product Type:	Primary Antibodies
Clone Name:	OTI2H3
Applications:	IHC, WB
Recommended Dilution:	WB 1:500~2000, IHC 1:2000
Reactivity:	Human, Rat, Mouse
Host:	Mouse
Isotype:	IgG2b
Clonality:	Monoclonal
Immunogen:	Human recombinant protein fragment corresponding to amino acids 347-628 of human ASH2L (NP_004665) produced in E.coli.
Formulation:	PBS (pH 7.3) containing 1% BSA, 50% glycerol and 0.02% sodium azide.
Concentration:	1 mg/ml
Purification:	Purified from mouse ascites fluids or tissue culture supernatant by affinity chromatography (protein A/G)
Conjugation:	Unconjugated
Storage:	Store at -20°C as received.
Stability:	Stable for 12 months from date of receipt.
Predicted Protein Size:	68.5 kDa
Gene Name:	ASH2 like histone lysine methyltransferase complex subunit
Database Link:	<a href="#">NP_004665</a> <a href="#">Entrez Gene 23808 Mouse</a> <a href="#">Entrez Gene 290829 Rat</a> <a href="#">Entrez Gene 9070 Human</a> <a href="#">Q9UBL3</a>
Synonyms:	ASH2; ASH2L1; ASH2L2; Bre2
Protein Families:	Druggable Genome, Transcription Factors



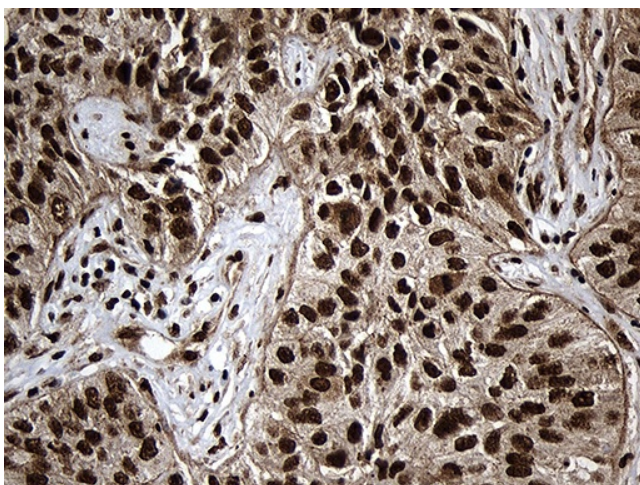
[View online »](#)

**Product images:**


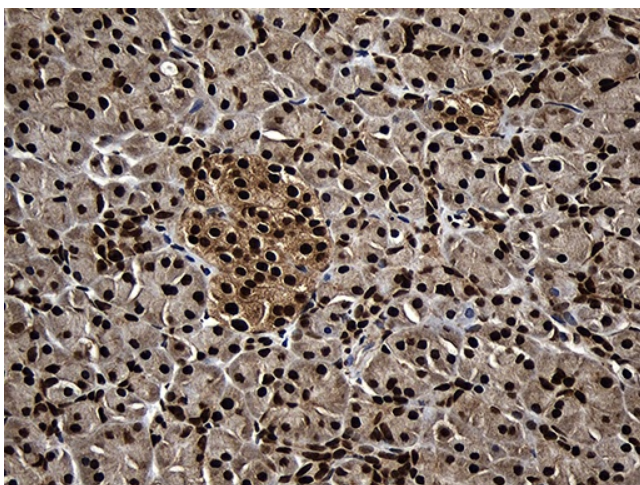
HEK293T cells were transfected with the pCMV6-ENTRY control (Left lane) or pCMV6-ENTRY ASH2L ([RC215552], Right lane) cDNA for 48 hrs and lysed. Equivalent amounts of cell lysates (5 ug per lane) were separated by SDS-PAGE and immunoblotted with anti-ASH2L (1:2000). Positive lysates [LY401483] (100ug) and [LC401483] (20ug) can be purchased separately from OriGene.



Western blot analysis of extracts (35ug) from 5 cell lines lysates by using anti-ASH2L monoclonal antibody (1:500).



Immunohistochemical staining of paraffin-embedded Carcinoma of Human lung tissue using anti-ASH2L mouse monoclonal antibody. (Heat-induced epitope retrieval by 1mM EDTA in 10mM Tris buffer (pH8.5) at 120°C for 3min, [TA810988]) (1:2000)



Immunohistochemical staining of paraffin-embedded Human pancreas tissue within the normal limits using anti-ASH2L mouse monoclonal antibody. (Heat-induced epitope retrieval by 1mM EDTA in 10mM Tris buffer (pH8.5) at 120°C for 3min, [TA810988]) (1:2000)