

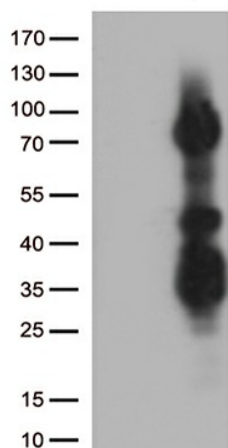
Product datasheet for **TA810987M**

ASH2L Mouse Monoclonal Antibody [Clone ID: OTI1A4]

Product data:

Product Type:	Primary Antibodies
Clone Name:	OTI1A4
Applications:	WB
Recommended Dilution:	WB 1:500
Reactivity:	Human, Mouse, Rat
Host:	Mouse
Isotype:	IgG1
Clonality:	Monoclonal
Immunogen:	Human recombinant protein fragment corresponding to amino acids 347-628 of human ASH2L (NP_004665) produced in E.coli.
Formulation:	PBS (pH 7.3) containing 1% BSA, 50% glycerol and 0.02% sodium azide.
Concentration:	1 mg/ml
Purification:	Purified from mouse ascites fluids or tissue culture supernatant by affinity chromatography (protein A/G)
Conjugation:	Unconjugated
Storage:	Store at -20°C as received.
Stability:	Stable for 12 months from date of receipt.
Predicted Protein Size:	68.5 kDa
Gene Name:	ASH2 like histone lysine methyltransferase complex subunit
Database Link:	NP_004665 Entrez Gene 23808 Mouse Entrez Gene 290829 Rat Entrez Gene 9070 Human Q9UBL3
Synonyms:	ASH2; ASH2L1; ASH2L2; Bre2
Protein Families:	Druggable Genome, Transcription Factors


[View online »](#)

Product images:


HEK293T cells were transfected with the pCMV6-ENTRY control (Left lane) or pCMV6-ENTRY ASH2L ([RC215552], Right lane) cDNA for 48 hrs and lysed. Equivalent amounts of cell lysates (5 ug per lane) were separated by SDS-PAGE and immunoblotted with anti-ASH2L. Positive lysates [LY401483] (100ug) and [LC401483] (20ug) can be purchased separately from OriGene.