

Product datasheet for **TA810976AM**

RNF11 Mouse Monoclonal Antibody (Biotin conjugated) [Clone ID: OTI1G7]

Product data:

Product Type:	Primary Antibodies
Clone Name:	OTI1G7
Applications:	WB
Recommended Dilution:	WB 1:2000
Reactivity:	Human, Mouse, Rat
Host:	Mouse
Isotype:	IgG1
Clonality:	Monoclonal
Immunogen:	Human recombinant protein fragment corresponding to amino acids 2-154 of human RNF11 (NP_055187) produced in E.coli.
Formulation:	PBS (pH 7.3) containing 1% BSA, 50% glycerol and 0.02% sodium azide.
Concentration:	0.5 mg/ml
Purification:	Purified from mouse ascites fluids or tissue culture supernatant by affinity chromatography (protein A/G)
Conjugation:	Biotin
Storage:	Store at -20°C as received.
Stability:	Stable for 12 months from date of receipt.
Predicted Protein Size:	17.3 kDa
Gene Name:	ring finger protein 11
Database Link:	NP_055187 Entrez Gene 26994 Human Q9Y3C5
Background:	The protein encoded by this gene contains a RING-H2 finger motif, which is known to be important for protein-protein interactions. The expression of this gene has been shown to be induced by mutant RET proteins (MEN2A/MEN2B). The germline mutations in RET gene are known to be responsible for the development of multiple endocrine neoplasia (MEN). [provided by RefSeq, Jul 2008]

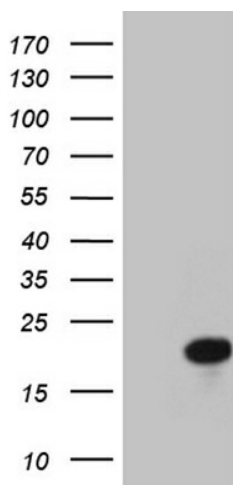


[View online »](#)

Synonyms: CGI-123; SID1669

Protein Families: Druggable Genome

Product images:



HEK293T cells were transfected with the pCMV6-ENTRY control (Left lane) or pCMV6-ENTRY RNF11 ([RC208220], Right lane) cDNA for 48 hrs and lysed. Equivalent amounts of cell lysates (5 ug per lane) were separated by SDS-PAGE and immunoblotted with anti-RNF11. Positive lysates [LY402321] (100ug) and [LC402321] (20ug) can be purchased separately from OriGene.