

## Product datasheet for **TA810969S**

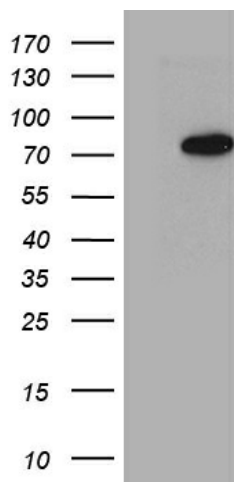
### PCCA Mouse Monoclonal Antibody [Clone ID: OTI1B10]

#### Product data:

Product Type:	Primary Antibodies
Clone Name:	OTI1B10
Applications:	WB
Recommended Dilution:	WB 1:2000
Reactivity:	Human, Mouse, Rat
Host:	Mouse
Isotype:	IgG1
Clonality:	Monoclonal
Immunogen:	Full length human recombinant protein of human PCCA (NP_000273) produced in HEK293T cell.
Formulation:	PBS (pH 7.3) containing 1% BSA, 50% glycerol and 0.02% sodium azide.
Concentration:	1 mg/ml
Purification:	Purified from mouse ascites fluids or tissue culture supernatant by affinity chromatography (protein A/G)
Conjugation:	Unconjugated
Storage:	Store at -20°C as received.
Stability:	Stable for 12 months from date of receipt.
Predicted Protein Size:	80.06 kDa
Gene Name:	propionyl-CoA carboxylase alpha subunit
Database Link:	<a href="#">NP_000273</a> <a href="#">Entrez Gene 110821 Mouse</a> <a href="#">Entrez Gene 687008 Rat</a> <a href="#">Entrez Gene 5095 Human</a> <a href="#">P05165</a>
Synonyms:	alpha polypeptide; mitochondrial; PCCase alpha subunit; propanoyl-CoA:carbon dioxide ligase alpha subunit; propionyl-CoA carboxylase alpha chain; propionyl-coenzyme A carboxylase; Propionyl Coenzyme A carboxylase alpha polypeptide
Protein Families:	Druggable Genome
Protein Pathways:	Metabolic pathways, Propanoate metabolism, Valine, leucine and isoleucine degradation



[View online »](#)

**Product images:**

HEK293T cells were transfected with the pCMV6-ENTRY control (Left lane) or pCMV6-ENTRY PCCA ([RC214832], Right lane) cDNA for 48 hrs and lysed. Equivalent amounts of cell lysates (5 ug per lane) were separated by SDS-PAGE and immunoblotted with anti-PCCA (1:2000). Positive lysates [LY400108] (100ug) and [LC400108] (20ug) can be purchased separately from OriGene.