

## Product datasheet for **TA810968S**

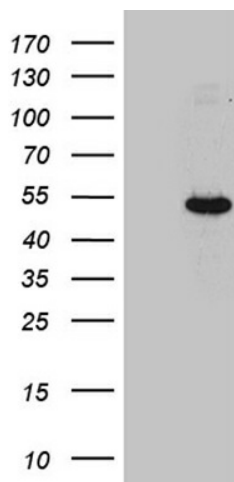
### JMJD5 (KDM8) Mouse Monoclonal Antibody [Clone ID: OTI5D11]

#### Product data:

Product Type:	Primary Antibodies
Clone Name:	OTI5D11
Applications:	WB
Recommended Dilution:	WB 1:2000
Reactivity:	Human
Host:	Mouse
Isotype:	IgG2a
Clonality:	Monoclonal
Immunogen:	Full length human recombinant protein of human JMJD5 (NP_079049) produced in HEK293T cell.
Formulation:	PBS (pH 7.3) containing 1% BSA, 50% glycerol and 0.02% sodium azide.
Concentration:	1 mg/ml
Purification:	Purified from mouse ascites fluids or tissue culture supernatant by affinity chromatography (protein A/G)
Conjugation:	Unconjugated
Storage:	Store at -20°C as received.
Stability:	Stable for 12 months from date of receipt.
Predicted Protein Size:	47.1 kDa
Gene Name:	lysine demethylase 8
Database Link:	<a href="#">NP_079049</a> <a href="#">Entrez Gene 79831 Human</a> <a href="#">Q8N371</a>
Background:	This gene likely encodes a histone lysine demethylase. Studies of a similar protein in mouse indicate a potential role for this protein as a tumor suppressor. Alternatively spliced transcript variants have been described. [provided by RefSeq, Feb 2009]
Synonyms:	JMJD5



[View online »](#)

**Product images:**

HEK293T cells were transfected with the pCMV6-ENTRY control (Cat# [PS100001], Left lane) or pCMV6-ENTRY JMJD5 (Cat# [RC206417], Right lane) cDNA for 48 hrs and lysed. Equivalent amounts of cell lysates (5 ug per lane) were separated by SDS-PAGE and immunoblotted with anti-JMJD5 (Cat# [TA810968]). Positive lysates [LY403027] (100ug) and [LC403027] (20ug) can be purchased separately from OriGene.