

Product datasheet for **TA810968AM**

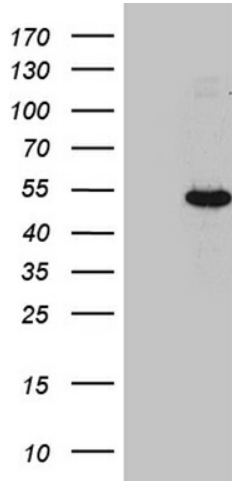
JMJD5 (KDM8) Mouse Monoclonal Antibody (Biotin conjugated) [Clone ID: OTI5D11]

Product data:

| | |
|-------------------------|--|
| Product Type: | Primary Antibodies |
| Clone Name: | OTI5D11 |
| Applications: | WB |
| Recommended Dilution: | WB 1:2000 |
| Reactivity: | Human |
| Host: | Mouse |
| Isotype: | IgG2a |
| Clonality: | Monoclonal |
| Immunogen: | Full length human recombinant protein of human JMJD5 (NP_079049) produced in HEK293T cell. |
| Formulation: | PBS (pH 7.3) containing 1% BSA, 50% glycerol and 0.02% sodium azide. |
| Concentration: | 0.5 mg/ml |
| Purification: | Purified from mouse ascites fluids or tissue culture supernatant by affinity chromatography (protein A/G) |
| Conjugation: | Biotin |
| Storage: | Store at -20°C as received. |
| Stability: | Stable for 12 months from date of receipt. |
| Predicted Protein Size: | 47.1 kDa |
| Gene Name: | lysine demethylase 8 |
| Database Link: | NP_079049 Entrez Gene 79831 Human Q8N371 |
| Background: | This gene likely encodes a histone lysine demethylase. Studies of a similar protein in mouse indicate a potential role for this protein as a tumor suppressor. Alternatively spliced transcript variants have been described. [provided by RefSeq, Feb 2009] |
| Synonyms: | JMJD5 |



[View online »](#)

Product images:

HEK293T cells were transfected with the pCMV6-ENTRY control (Cat# [PS100001], Left lane) or pCMV6-ENTRY JMJD5 (Cat# [RC206417], Right lane) cDNA for 48 hrs and lysed. Equivalent amounts of cell lysates (5 ug per lane) were separated by SDS-PAGE and immunoblotted with anti-JMJD5 (Cat# [TA810968]). Positive lysates [LY403027] (100ug) and [LC403027] (20ug) can be purchased separately from OriGene.