

## Product datasheet for **TA810967AM**

### ZKSCAN1 Mouse Monoclonal Antibody (Biotin conjugated) [Clone ID: OTI3C4]

#### Product data:

Product Type:	Primary Antibodies
Clone Name:	OTI3C4
Applications:	IHC, WB
Recommended Dilution:	WB 1:2000, IHC 1:2000
Reactivity:	Human, Mouse, Rat
Host:	Mouse
Isotype:	IgG1
Clonality:	Monoclonal
Immunogen:	Full length human recombinant protein of human ZKSCAN1 (NP_003430) produced in E.coli.
Formulation:	PBS (pH 7.3) containing 1% BSA, 50% glycerol and 0.02% sodium azide.
Concentration:	0.5 mg/ml
Purification:	Purified from mouse ascites fluids or tissue culture supernatant by affinity chromatography (protein A/G)
Conjugation:	Biotin
Storage:	Store at -20°C as received.
Stability:	Stable for 12 months from date of receipt.
Predicted Protein Size:	63.4 kDa
Gene Name:	zinc finger with KRAB and SCAN domains 1
Database Link:	<a href="#">NP_003430</a> <a href="#">Entrez Gene 74570 Mouse</a> <a href="#">Entrez Gene 498160 Rat</a> <a href="#">Entrez Gene 7586 Human</a> <a href="#">P17029</a>
Background:	The ZKSCAN1 gene encodes a transcriptional regulator of the KRAB (Kruppel-associated box) subfamily of zinc finger proteins, which contain repeated Cys2-His2 (C2H2) zinc finger domains that are connected by conserved sequences, called H/C links (summarized by Tommerup and Vissing, 1995 [PubMed 7557990]). Transcriptional regulatory proteins containing tandemly repeated zinc finger domains are thought to be involved in both normal and abnormal cellular proliferation and differentiation. See ZNF91 (MIM 603971) for general information on zinc finger proteins. [supplied by OMIM, Jul 2010]

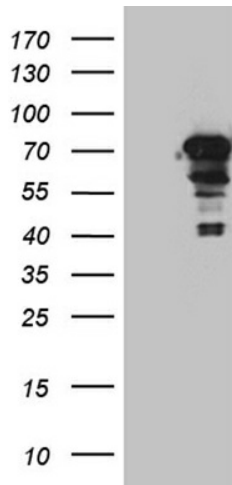


[View online »](#)

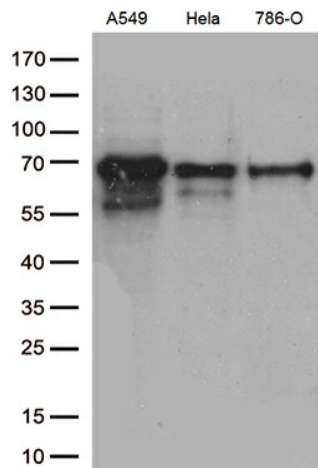
**Synonyms:** 9130423L19Rik; KOX18; PHZ-37; ZNF36; ZNF139; ZSCAN33

**Protein Families:** Transcription Factors

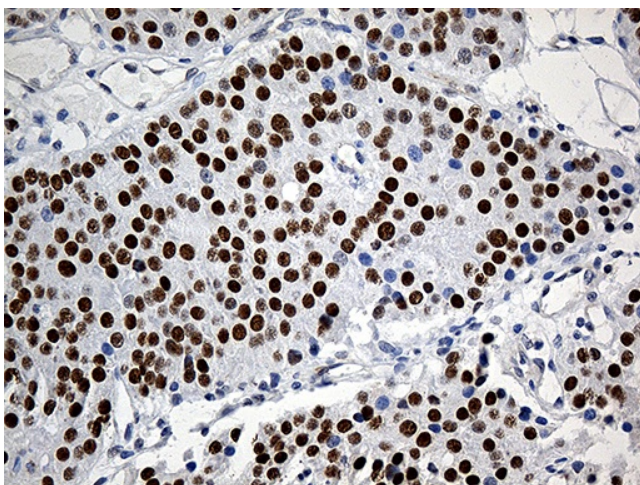
**Product images:**



HEK293T cells were transfected with the pCMV6-ENTRY control (Left lane) or pCMV6-ENTRY ZKSCAN1 ([RC205035], Right lane) cDNA for 48 hrs and lysed. Equivalent amounts of cell lysates (5 ug per lane) were separated by SDS-PAGE and immunoblotted with anti-ZKSC. Positive lysates [LY418696] (100ug) and [LC418696] (20ug) can be purchased separately from OriGene.



Western blot analysis of extracts (35ug) from 3 cell lines by using anti-ZKSCAN1 monoclonal antibody (1:500).



Immunohistochemical staining of paraffin-embedded Carcinoma of Human pancreas tissue using anti-ZKSCAN1 mouse monoclonal antibody. (Heat-induced epitope retrieval by 1mM EDTA in 10mM Tris buffer (pH8.5) at 120°C for 3min, [TA810967]) (1:2000)