

## Product datasheet for **TA810966BM**

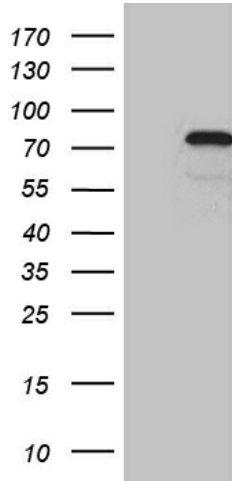
### ZKSCAN1 Mouse Monoclonal Antibody (HRP conjugated) [Clone ID: OTI2C9]

#### Product data:

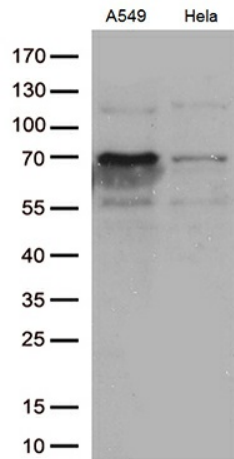
Product Type:	Primary Antibodies
Clone Name:	OTI2C9
Applications:	IHC, WB
Recommended Dilution:	WB 1:2000, IHC 1:500
Reactivity:	Human, Mouse, Rat
Host:	Mouse
Isotype:	IgG1
Clonality:	Monoclonal
Immunogen:	Full length human recombinant protein of human ZKSCAN1 (NP_003430) produced in E.coli.
Formulation:	PBS (pH 7.3) containing 1% BSA, 50% glycerol.
Concentration:	0.5 mg/ml
Purification:	Purified from mouse ascites fluids or tissue culture supernatant by affinity chromatography (protein A/G)
Conjugation:	HRP
Storage:	Store at -20°C as received.
Stability:	Stable for 12 months from date of receipt.
Predicted Protein Size:	63.4 kDa
Gene Name:	zinc finger with KRAB and SCAN domains 1
Database Link:	<a href="#">NP_003430</a> <a href="#">Entrez Gene 74570 Mouse</a> <a href="#">Entrez Gene 498160 Rat</a> <a href="#">Entrez Gene 7586 Human</a> <a href="#">P17029</a>
Synonyms:	9130423L19Rik; KOX18; PHZ-37; ZNF36; ZNF139; ZSCAN33
Protein Families:	Transcription Factors



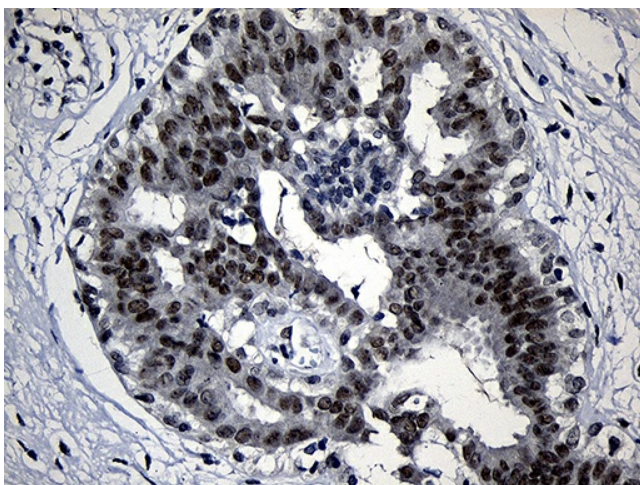
[View online »](#)

**Product images:**


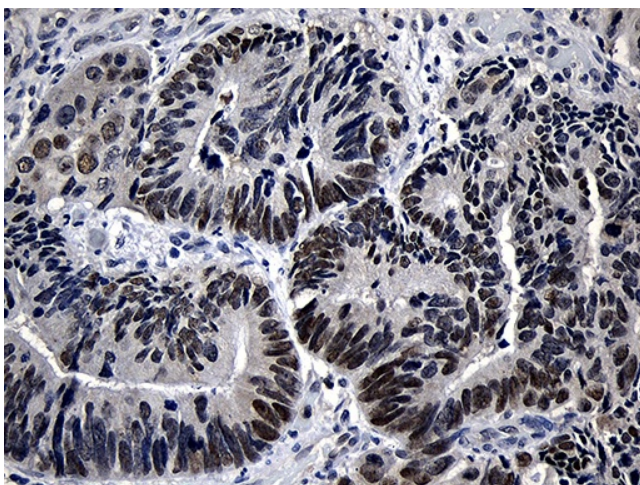
HEK293T cells were transfected with the pCMV6-ENTRY control (Cat# [PS100001], Left lane) or pCMV6-ENTRY ZKSCAN1 (Cat# [RC205035], Right lane) cDNA for 48 hrs and lysed. Equivalent amounts of cell lysates (5 ug per lane) were separated by SDS-PAGE and immunoblotted with anti-ZKSCAN1 (Cat# [TA810966])(1:2000). Positive lysates [LY418696] (100ug) and [LC418696] (20ug) can be purchased separately from OriGene.



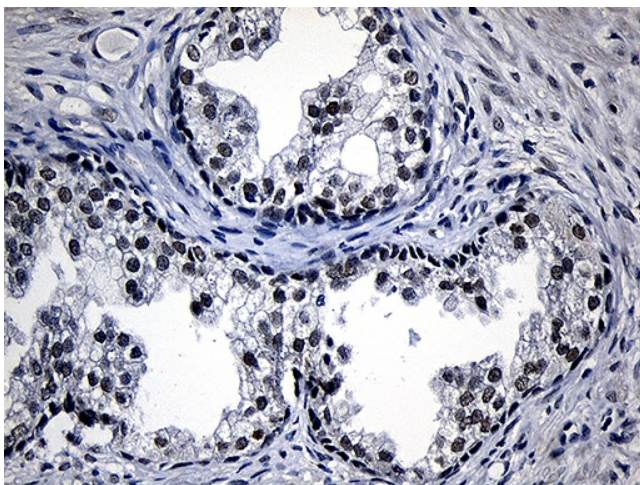
Western blot analysis of extracts (35ug) from 2 cell lines by using anti-ZKSCAN1 monoclonal antibody (1:500).



Immunohistochemical staining of paraffin-embedded Human breast tissue within the normal limits using anti-ZKSCAN1 mouse monoclonal antibody. (Heat-induced epitope retrieval by 1mM EDTA in 10mM Tris buffer (pH8.5) at 120°C for 3min, [TA810966]) (1:500)



Immunohistochemical staining of paraffin-embedded Adenocarcinoma of Human colon tissue using anti-ZKSCAN1 mouse monoclonal antibody. (Heat-induced epitope retrieval by 1mM EDTA in 10mM Tris buffer (pH8.5) at 120°C for 3min, [TA810966]) (1:500)



Immunohistochemical staining of paraffin-embedded Human prostate tissue within the normal limits using anti-ZKSCAN1 mouse monoclonal antibody. (Heat-induced epitope retrieval by 1mM EDTA in 10mM Tris buffer (pH8.5) at 120°C for 3min, [TA810966]) (1:500)