

Product datasheet for **TA810965M**

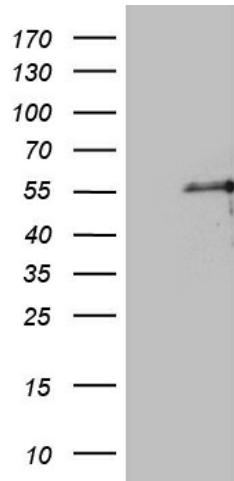
PTF1A Mouse Monoclonal Antibody [Clone ID: OT11H6]

Product data:

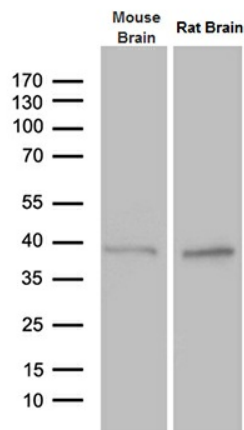
Product Type:	Primary Antibodies
Clone Name:	OT11H6
Applications:	WB
Recommended Dilution:	WB 1:500~2000
Reactivity:	Human, Rat, Mouse
Host:	Mouse
Isotype:	IgG1
Clonality:	Monoclonal
Immunogen:	Full length human recombinant protein of human PTF1A (NP_835455) produced in E.coli.
Formulation:	PBS (pH 7.3) containing 1% BSA, 50% glycerol and 0.02% sodium azide.
Concentration:	1 mg/ml
Purification:	Purified from mouse ascites fluids or tissue culture supernatant by affinity chromatography (protein A/G)
Conjugation:	Unconjugated
Storage:	Store at -20°C as received.
Stability:	Stable for 12 months from date of receipt.
Predicted Protein Size:	34.8 kDa
Gene Name:	pancreas specific transcription factor, 1a
Database Link:	NP_835455 Entrez Gene 19213 Mouse Entrez Gene 117034 Rat Entrez Gene 256297 Human Q7RTS3
Synonyms:	bHLHa29; PACA; PAGEN2; PTF1-p48
Protein Families:	Embryonic stem cells, ES Cell Differentiation/IPS


[View online »](#)

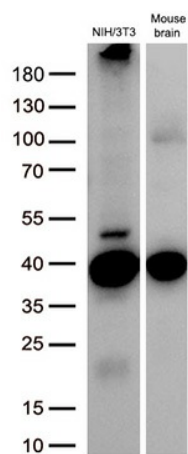
Product images:



HEK293T cells were transfected with the pCMV6-ENTRY control (Cat# [PS100001], Left lane) or pCMV6-ENTRY PTF1A (Cat# [RC221496], Right lane) cDNA for 48 hrs and lysed. Equivalent amounts of cell lysates (5 ug per lane) were separated by SDS-PAGE and immunoblotted with anti-PTF1A (Cat# [TA810965])(1:2000). Positive lysates [LY406006] (100ug) and [LC406006] (20ug) can be purchased separately from OriGene.



Western blot analysis of extracts (35ug) from mouse brain and rat brain tissue lysate by using anti-PTF1A monoclonal antibody (1:500).



Western blot analysis of extracts (30ug per lane) from 1 cell line and 1 tissue lysates by using anti-PTF1A antibody ([TA810965], 1:1000; 1mg/ml).