

Product datasheet for **TA810961BM**

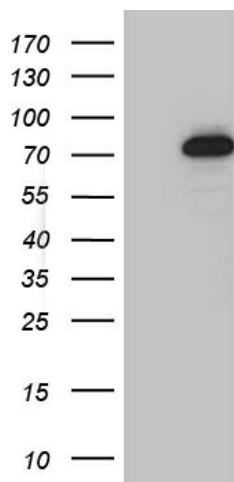
ALF (GTF2A1L) Mouse Monoclonal Antibody (HRP conjugated) [Clone ID: OTI4B4]

Product data:

Product Type:	Primary Antibodies
Clone Name:	OTI4B4
Applications:	WB
Recommended Dilution:	WB 1:2000
Reactivity:	Human
Host:	Mouse
Isotype:	IgG1
Clonality:	Monoclonal
Immunogen:	Human recombinant protein fragment corresponding to amino acids 183-478 of human GTF2A1L (NP_006863) produced in E.coli.
Formulation:	PBS (pH 7.3) containing 1% BSA, 50% glycerol.
Concentration:	0.5 mg/ml
Purification:	Purified from mouse ascites fluids or tissue culture supernatant by affinity chromatography (protein A/G)
Conjugation:	HRP
Storage:	Store at -20°C as received.
Stability:	Stable for 12 months from date of receipt.
Predicted Protein Size:	52.3 kDa
Gene Name:	general transcription factor IIA subunit 1 like
Database Link:	NP_006863 Entrez Gene 11036 Human Q9UNN4
Synonyms:	ALF
Protein Families:	Transcription Factors
Protein Pathways:	Basal transcription factors



[View online »](#)

Product images:

HEK293T cells were transfected with the pCMV6-ENTRY control (Left lane) or pCMV6-ENTRY GTF2A1L ([RC205264], Right lane) cDNA for 48 hrs and lysed. Equivalent amounts of cell lysates (5 ug per lane) were separated by SDS-PAGE and immunoblotted with anti-GTF2A1L (1:2000). Positive lysates [LY416352] (100ug) and [LC416352] (20ug) can be purchased separately from OriGene.