

## Product datasheet for **TA810959BM**

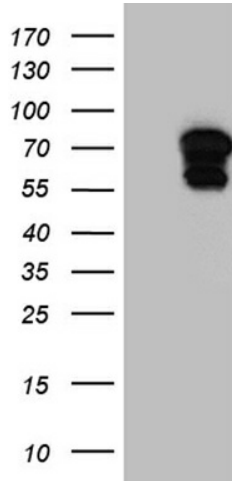
### ALF (GTF2A1L) Mouse Monoclonal Antibody (HRP conjugated) [Clone ID: OTI1D3]

#### Product data:

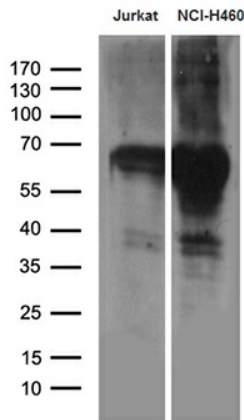
Product Type:	Primary Antibodies
Clone Name:	OTI1D3
Applications:	WB
Recommended Dilution:	WB 1:500~2000
Reactivity:	Human
Host:	Mouse
Isotype:	IgG2b
Clonality:	Monoclonal
Immunogen:	Human recombinant protein fragment corresponding to amino acids 183-478 of human GTF2A1L (NP_006863) produced in E.coli.
Formulation:	PBS (pH 7.3) containing 1% BSA, 50% glycerol.
Concentration:	0.5 mg/ml
Purification:	Purified from mouse ascites fluids or tissue culture supernatant by affinity chromatography (protein A/G)
Conjugation:	HRP
Storage:	Store at -20°C as received.
Stability:	Stable for 12 months from date of receipt.
Predicted Protein Size:	52.3 kDa
Gene Name:	general transcription factor IIA subunit 1 like
Database Link:	<a href="#">NP_006863</a> <a href="#">Entrez Gene 11036 Human</a> <a href="#">Q9UNN4</a>
Synonyms:	ALF
Protein Families:	Transcription Factors
Protein Pathways:	Basal transcription factors



[View online »](#)

**Product images:**


HEK293T cells were transfected with the pCMV6-ENTRY control (Cat# [PS100001], Left lane) or pCMV6-ENTRY GTF2A1L (Cat# [RC205264], Right lane) cDNA for 48 hrs and lysed. Equivalent amounts of cell lysates (5 ug per lane) were separated by SDS-PAGE and immunoblotted with anti-GTF2A1L (Cat# [TA810959])(1:2000). Positive lysates [LY416352] (100ug) and [LC416352] (20ug) can be purchased separately from OriGene.



Western blot analysis of extracts (35ug) from 2 different cell lines by using anti-GTF2A1L monoclonal antibody (1:500).