

## Product datasheet for TA810952S

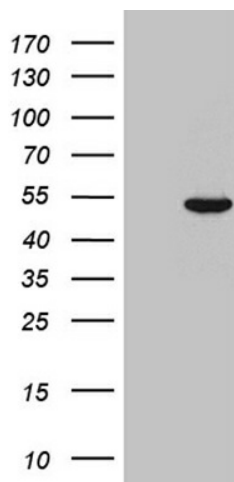
### JMJD5 (KDM8) Mouse Monoclonal Antibody [Clone ID: OTI5E8]

#### Product data:

|                         |  |
|-------------------------|--|
| Product Type:           | Primary Antibodies   |
| Clone Name:             | OTI5E8   |
| Applications:           | WB   |
| Recommended Dilution:   | WB 1:2000  |
| Reactivity:             | Human  |
| Host:                   | Mouse  |
| Isotype:                | IgG2a  |
| Clonality:              | Monoclonal   |
| Immunogen:              | Full length human recombinant protein of human JMJD5 (NP_079049) produced in HEK293T cell.   |
| Formulation:            | PBS (pH 7.3) containing 1% BSA, 50% glycerol and 0.02% sodium azide.   |
| Concentration:          | 1 mg/ml  |
| Purification:           | Purified from mouse ascites fluids or tissue culture supernatant by affinity chromatography (protein A/G)  |
| Conjugation:            | Unconjugated   |
| Storage:                | Store at -20°C as received.  |
| Stability:              | Stable for 12 months from date of receipt.   |
| Predicted Protein Size: | 47.1 kDa   |
| Gene Name:              | lysine demethylase 8   |
| Database Link:          | <a href="#">NP_079049</a><br><a href="#">Entrez Gene 79831 Human</a><br><a href="#">Q8N371</a>   |
| Background:             | This gene likely encodes a histone lysine demethylase. Studies of a similar protein in mouse indicate a potential role for this protein as a tumor suppressor. Alternatively spliced transcript variants have been described. [provided by RefSeq, Feb 2009] |
| Synonyms:               | JMJD5  |



[View online »](#)

**Product images:**

HEK293T cells were transfected with the pCMV6-ENTRY control (Left lane) or pCMV6-ENTRY JMJD5 ([RC206417], Right lane) cDNA for 48 hrs and lysed. Equivalent amounts of cell lysates (5 ug per lane) were separated by SDS-PAGE and immunoblotted with anti-JMJD5. Positive lysates [LY403027] (100ug) and [LC403027] (20ug) can be purchased separately from OriGene.