

Product datasheet for **TA810951AM**

MLX Mouse Monoclonal Antibody (Biotin conjugated) [Clone ID: OTI1D11]

Product data:

Product Type:	Primary Antibodies
Clone Name:	OTI1D11
Applications:	WB
Recommended Dilution:	WB 1:500
Reactivity:	Human, Mouse, Rat
Host:	Mouse
Isotype:	IgG1
Clonality:	Monoclonal
Immunogen:	Full length human recombinant protein of human MLX (NP_937847) produced in HEK293T cell.
Formulation:	PBS (pH 7.3) containing 1% BSA, 50% glycerol and 0.02% sodium azide.
Concentration:	0.5 mg/ml
Purification:	Purified from mouse ascites fluids or tissue culture supernatant by affinity chromatography (protein A/G)
Conjugation:	Biotin
Storage:	Store at -20°C as received.
Stability:	Stable for 12 months from date of receipt.
Predicted Protein Size:	27.7 kDa
Gene Name:	MLX, MAX dimerization protein
Database Link:	NP_937847 Entrez Gene 21428 Mouse Entrez Gene 360631 Rat Entrez Gene 6945 Human Q9UH92
Background:	The product of this gene belongs to the family of basic helix-loop-helix leucine zipper (bHLH-Zip) transcription factors. These factors form heterodimers with Mad proteins and play a role in proliferation, determination and differentiation. This gene product may act to diversify Mad family function by its restricted association with a subset of the Mad family of transcriptional repressors, namely, Mad1 and Mad4. Alternatively spliced transcript variants encoding different isoforms have been identified for this gene. [provided by RefSeq, Jul 2008]

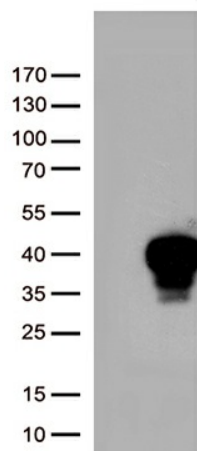


[View online »](#)

Synonyms: bHLHd13; MAD7; MXD7; TCFL4; TF4

Protein Families: Druggable Genome, Transcription Factors

Product images:



HEK293T cells were transfected with the pCMV6-ENTRY control (Cat# [PS100001], Left lane) or pCMV6-ENTRY MLX (Cat# [RC201911], Right lane) cDNA for 48 hrs and lysed. Equivalent amounts of cell lysates (5 ug per lane) were separated by SDS-PAGE and immunoblotted with anti-MLX (Cat# [TA810951])(1:500). Positive lysates [LY404977] (100ug) and [LC404977] (20ug) can be purchased separately from OriGene.