

## Product datasheet for **TA810945**

### PTF1A Mouse Monoclonal Antibody [Clone ID: OTI5E5]

#### Product data:

Product Type:	Primary Antibodies
Clone Name:	OTI5E5
Applications:	WB
Recommended Dilution:	WB 1:2000
Reactivity:	Human, Mouse, Rat
Host:	Mouse
Isotype:	IgG2b
Clonality:	Monoclonal
Immunogen:	Full length human recombinant protein of human PTF1A (NP_835455) produced in E.coli.
Formulation:	PBS (pH 7.3) containing 1% BSA, 50% glycerol and 0.02% sodium azide.
Concentration:	1 mg/ml
Purification:	Purified from mouse ascites fluids or tissue culture supernatant by affinity chromatography (protein A/G)
Conjugation:	Unconjugated
Storage:	Store at -20°C as received.
Stability:	Stable for 12 months from date of receipt.
Predicted Protein Size:	34.8 kDa
Gene Name:	pancreas specific transcription factor, 1a
Database Link:	<a href="#">NP_835455</a> <a href="#">Entrez Gene 19213 Mouse</a> <a href="#">Entrez Gene 117034 Rat</a> <a href="#">Entrez Gene 256297 Human</a> <a href="#">Q7RTS3</a>

**Background:** This gene encodes a protein that is a component of the pancreas transcription factor 1 complex (PTF1) and is known to have a role in mammalian pancreatic development. The protein plays a role in determining whether cells allocated to the pancreatic buds continue towards pancreatic organogenesis or revert back to duodenal fates. The protein is thought to be involved in the maintenance of exocrine pancreas-specific gene expression including elastase 1 and amylase. Mutations in this gene cause cerebellar agenesis and loss of expression is seen in ductal type pancreas cancers. [provided by RefSeq, Jul 2008]

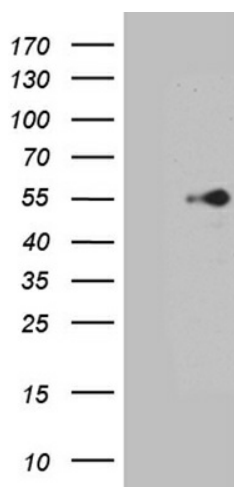


[View online »](#)

**Synonyms:** bHLHa29; PACA; PAGEN2; PTF1-p48

**Protein Families:** Embryonic stem cells, ES Cell Differentiation/IPS

**Product images:**



HEK293T cells were transfected with the pCMV6-ENTRY control (Left lane) or pCMV6-ENTRY PTF1A ([RC221496], Right lane) cDNA for 48 hrs and lysed. Equivalent amounts of cell lysates (5 ug per lane) were separated by SDS-PAGE and immunoblotted with anti-PTF1A. Positive lysates [LY406006] (100ug) and [LC406006] (20ug) can be purchased separately from OriGene.