

Product datasheet for **TA810944S**

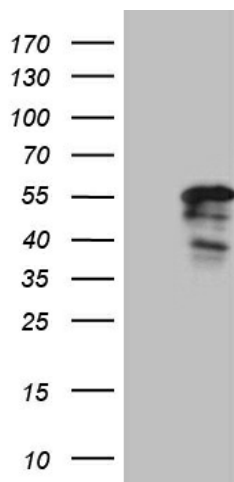
PTF1A Mouse Monoclonal Antibody [Clone ID: OTI3G1]

Product data:

Product Type:	Primary Antibodies
Clone Name:	OTI3G1
Applications:	WB
Recommended Dilution:	WB 1:2000
Reactivity:	Human, Mouse, Rat
Host:	Mouse
Isotype:	IgG2b
Clonality:	Monoclonal
Immunogen:	Full length human recombinant protein of human PTF1A (NP_835455) produced in E.coli.
Formulation:	PBS (pH 7.3) containing 1% BSA, 50% glycerol and 0.02% sodium azide.
Concentration:	1 mg/ml
Purification:	Purified from mouse ascites fluids or tissue culture supernatant by affinity chromatography (protein A/G)
Conjugation:	Unconjugated
Storage:	Store at -20°C as received.
Stability:	Stable for 12 months from date of receipt.
Predicted Protein Size:	34.8 kDa
Gene Name:	pancreas specific transcription factor, 1a
Database Link:	NP_835455 Entrez Gene 19213 Mouse Entrez Gene 117034 Rat Entrez Gene 256297 Human Q7RTS3
Synonyms:	bHLHa29; PACA; PAGEN2; PTF1-p48
Protein Families:	Embryonic stem cells, ES Cell Differentiation/IPS



[View online »](#)

Product images:

HEK293T cells were transfected with the pCMV6-ENTRY control (Left lane) or pCMV6-ENTRY PTF1A ([RC221496], Right lane) cDNA for 48 hrs and lysed. Equivalent amounts of cell lysates (5 ug per lane) were separated by SDS-PAGE and immunoblotted with anti-PTF1A (1:2000). Positive lysates [LY406006] (100ug) and [LC406006] (20ug) can be purchased separately from OriGene.