

## Product datasheet for **TA810938AM**

### PHLDA1 Mouse Monoclonal Antibody (Biotin conjugated) [Clone ID: OTI4G2]

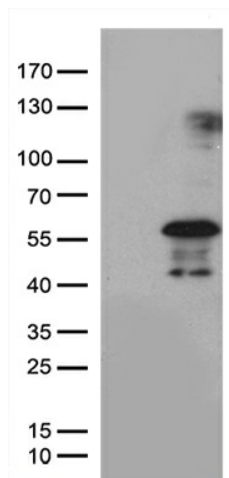
#### Product data:

Product Type:	Primary Antibodies
Clone Name:	OTI4G2
Applications:	WB
Recommended Dilution:	WB 1:500
Reactivity:	Human, Rat
Host:	Mouse
Isotype:	IgG1
Clonality:	Monoclonal
Immunogen:	Human recombinant protein fragment corresponding to amino acids 183-401 of human PHLDA1 (NP_031376) produced in E.coli.
Formulation:	PBS (pH 7.3) containing 1% BSA, 50% glycerol and 0.02% sodium azide.
Concentration:	0.5 mg/ml
Purification:	Purified from mouse ascites fluids or tissue culture supernatant by affinity chromatography (protein A/G)
Conjugation:	Biotin
Storage:	Store at -20°C as received.
Stability:	Stable for 12 months from date of receipt.
Predicted Protein Size:	44.8 kDa
Gene Name:	pleckstrin homology like domain family A member 1
Database Link:	<a href="#">NP_031376</a> <a href="#">Entrez Gene 29380 Rat</a> <a href="#">Entrez Gene 22822 Human</a> <a href="#">Q8WV24</a>
Background:	This gene encodes an evolutionarily conserved proline-histidine rich nuclear protein. The encoded protein may play an important role in the anti-apoptotic effects of insulin-like growth factor-1. [provided by RefSeq, Jul 2008]
Synonyms:	DT1P1B11; PHRIP; TDAG51

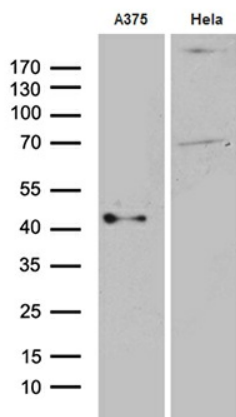


[View online »](#)

## Product images:



HEK293T cells were transfected with the pCMV6-ENTRY control (Left lane) or pCMV6-ENTRY PHLDA1 ([RC220155], Right lane) cDNA for 48 hrs and lysed. Equivalent amounts of cell lysates (5 ug per lane) were separated by SDS-PAGE and immunoblotted with anti-PHLDA. Positive lysates [LY402133] (100ug) and [LC402133] (20ug) can be purchased separately from OriGene.



Western blot analysis of extracts (35ug) from 2 cell lines by using anti-PHLDA1 monoclonal antibody (1:500).