

## Product datasheet for **TA810917**

### SLU7 Mouse Monoclonal Antibody [Clone ID: OTI7C8]

#### Product data:

Product Type:	Primary Antibodies
Clone Name:	OTI7C8
Applications:	WB
Recommended Dilution:	WB 1:2000
Reactivity:	Human, Mouse, Rat
Host:	Mouse
Isotype:	IgG1
Clonality:	Monoclonal
Immunogen:	Human recombinant protein fragment corresponding to amino acids 1-300 of human SLU7 (NP_006416) produced in E.coli.
Formulation:	PBS (pH 7.3) containing 1% BSA, 50% glycerol and 0.02% sodium azide.
Concentration:	1 mg/ml
Purification:	Purified from mouse ascites fluids or tissue culture supernatant by affinity chromatography (protein A/G)
Conjugation:	Unconjugated
Storage:	Store at -20°C as received.
Stability:	Stable for 12 months from date of receipt.
Predicted Protein Size:	68.2 kDa
Gene Name:	SLU7 homolog, splicing factor
Database Link:	<a href="#">NP_006416</a> <a href="#">Entrez Gene 193116 MouseEntrez Gene 303057 RatEntrez Gene 10569 Human O95391</a>
Background:	Pre-mRNA splicing occurs in two sequential transesterification steps. The protein encoded by this gene is a splicing factor that has been found to be essential during the second catalytic step in the pre-mRNA splicing process. It associates with the spliceosome and contains a zinc knuckle motif that is found in other splicing factors and is involved in protein-nucleic acid and protein-protein interactions. [provided by RefSeq, Jul 2008]

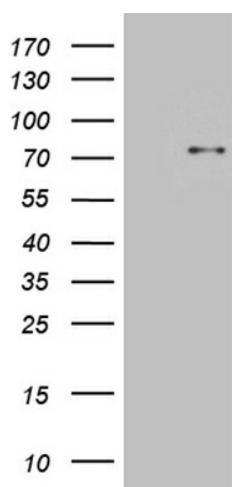


[View online »](#)

Synonyms: 9G8; hSlu7

Protein Pathways: Spliceosome

### Product images:



HEK293T cells were transfected with the pCMV6-ENTRY control (Left lane) or pCMV6-ENTRY SLU7 ([RC202113], Right lane) cDNA for 48 hrs and lysed. Equivalent amounts of cell lysates (5 ug per lane) were separated by SDS-PAGE and immunoblotted with anti-SLU7. Positive lysates [LY416650] (100ug) and [LC416650] (20ug) can be purchased separately from OriGene.