

Product datasheet for **TA810916S**

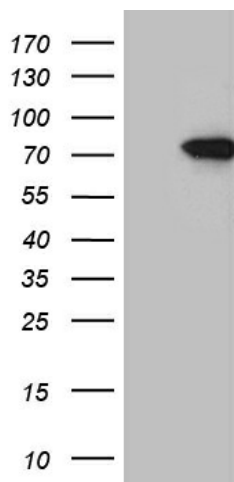
SLU7 Mouse Monoclonal Antibody [Clone ID: OTI7B7]

Product data:

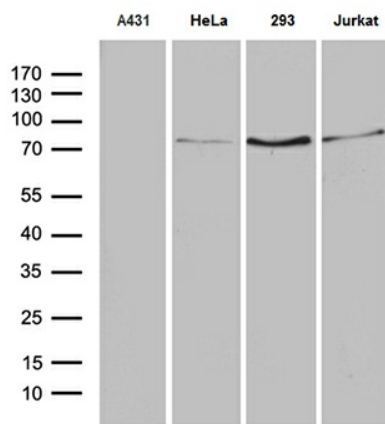
Product Type:	Primary Antibodies
Clone Name:	OTI7B7
Applications:	WB
Recommended Dilution:	WB 1:500~2000
Reactivity:	Human, Mouse, Rat
Host:	Mouse
Isotype:	IgG2b
Clonality:	Monoclonal
Immunogen:	Human recombinant protein fragment corresponding to amino acids 1-300 of human SLU7 (NP_006416) produced in E.coli.
Formulation:	PBS (pH 7.3) containing 1% BSA, 50% glycerol and 0.02% sodium azide.
Concentration:	1 mg/ml
Purification:	Purified from mouse ascites fluids or tissue culture supernatant by affinity chromatography (protein A/G)
Conjugation:	Unconjugated
Storage:	Store at -20°C as received.
Stability:	Stable for 12 months from date of receipt.
Predicted Protein Size:	68.2 kDa
Gene Name:	SLU7 homolog, splicing factor
Database Link:	NP_006416 Entrez Gene 193116 MouseEntrez Gene 303057 RatEntrez Gene 10569 Human O95391
Synonyms:	9G8; hSlu7
Protein Pathways:	Spliceosome



[View online »](#)

Product images:


HEK293T cells were transfected with the pCMV6-ENTRY control (Left lane) or pCMV6-ENTRY SLU7 ([RC202113], Right lane) cDNA for 48 hrs and lysed. Equivalent amounts of cell lysates (5 ug per lane) were separated by SDS-PAGE and immunoblotted with anti-SLU7 (1:2000). Positive lysates [LY416650] (100ug) and [LC416650] (20ug) can be purchased separately from OriGene.



Western blot analysis of extracts (35ug) from 4 different cell lines by using anti-SLU7 monoclonal antibody (1:500).