

## Product datasheet for **TA810915S**

### SLU7 Mouse Monoclonal Antibody [Clone ID: OTI5A7]

#### Product data:

Product Type:	Primary Antibodies
Clone Name:	OTI5A7
Applications:	IHC, WB
Recommended Dilution:	WB 1:500, IHC 1:1000
Reactivity:	Human, Mouse, Rat
Host:	Mouse
Isotype:	IgG1
Clonality:	Monoclonal
Immunogen:	Human recombinant protein fragment corresponding to amino acids 1-300 of human SLU7 (NP_006416) produced in E.coli.
Formulation:	PBS (pH 7.3) containing 1% BSA, 50% glycerol and 0.02% sodium azide.
Concentration:	1 mg/ml
Purification:	Purified from mouse ascites fluids or tissue culture supernatant by affinity chromatography (protein A/G)
Conjugation:	Unconjugated
Storage:	Store at -20°C as received.
Stability:	Stable for 12 months from date of receipt.
Predicted Protein Size:	68.2 kDa
Gene Name:	SLU7 homolog, splicing factor
Database Link:	<a href="#">NP_006416</a> <a href="#">Entrez Gene 193116 Mouse</a> <a href="#">Entrez Gene 303057 Rat</a> <a href="#">Entrez Gene 10569 Human</a> <a href="#">O95391</a>
Background:	Pre-mRNA splicing occurs in two sequential transesterification steps. The protein encoded by this gene is a splicing factor that has been found to be essential during the second catalytic step in the pre-mRNA splicing process. It associates with the spliceosome and contains a zinc knuckle motif that is found in other splicing factors and is involved in protein-nucleic acid and protein-protein interactions. [provided by RefSeq, Jul 2008]

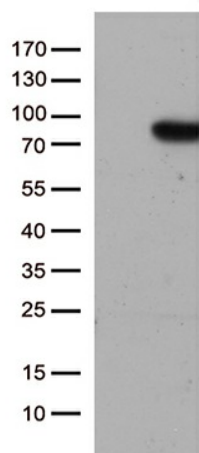


[View online »](#)

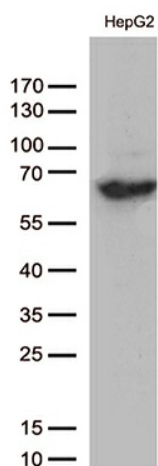
Synonyms: 9G8; hSlu7

Protein Pathways: Spliceosome

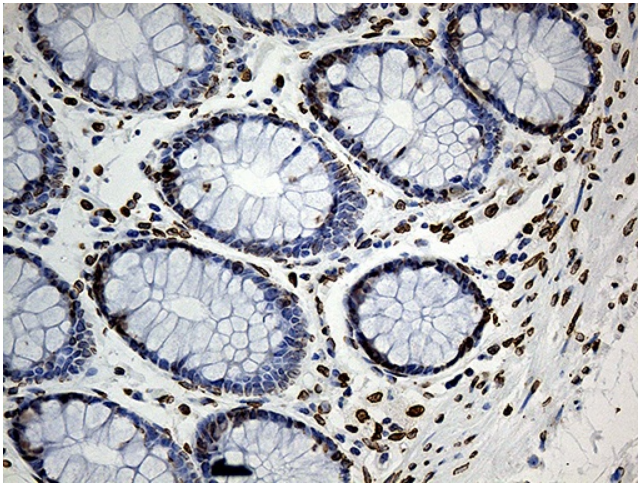
**Product images:**



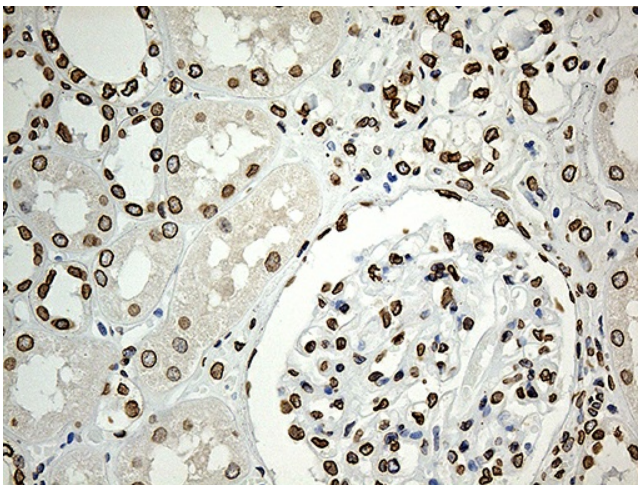
HEK293T cells were transfected with the pCMV6-ENTRY control (Cat# [PS100001], Left lane) or pCMV6-ENTRY SLU7 (Cat# [RC202113], Right lane) cDNA for 48 hrs and lysed. Equivalent amounts of cell lysates (5 ug per lane) were separated by SDS-PAGE and immunoblotted with anti-SLU7 (Cat# [TA810915])(1:500). Positive lysates [LY416650] (100ug) and [LC416650] (20ug) can be purchased separately from OriGene.



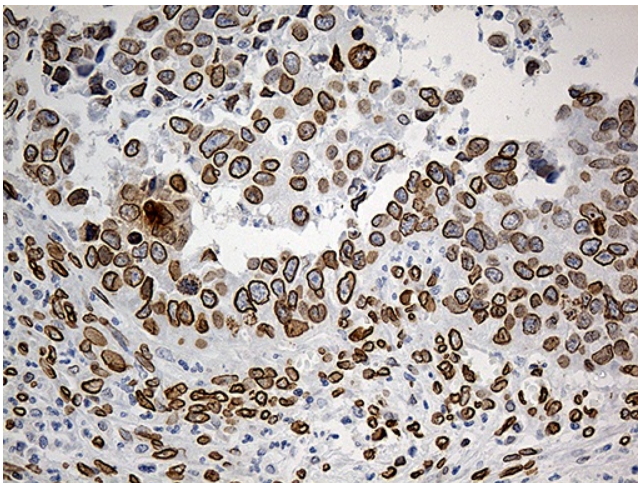
Western blot analysis of extracts (35ug) from HepG2 cell lysates by using anti-SLU7 monoclonal antibody (1:500).



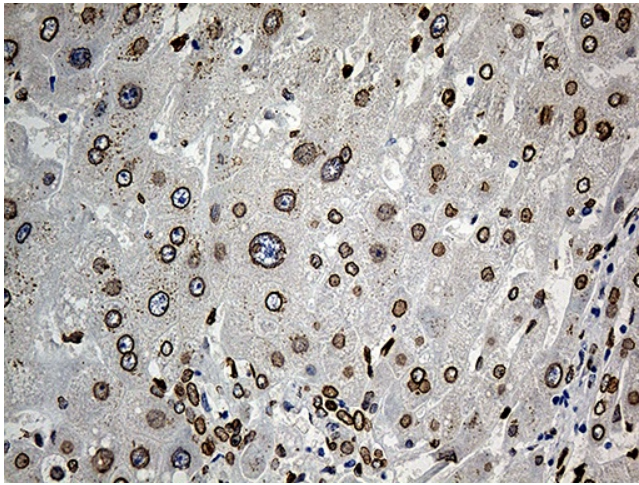
Immunohistochemical staining of paraffin-embedded Human colon tissue within the normal limits using anti-SLU7 mouse monoclonal antibody. (Heat-induced epitope retrieval by 1mM EDTA in 10mM Tris buffer (pH8.5) at 120°C for 3min, [TA810915]) (1:1000)



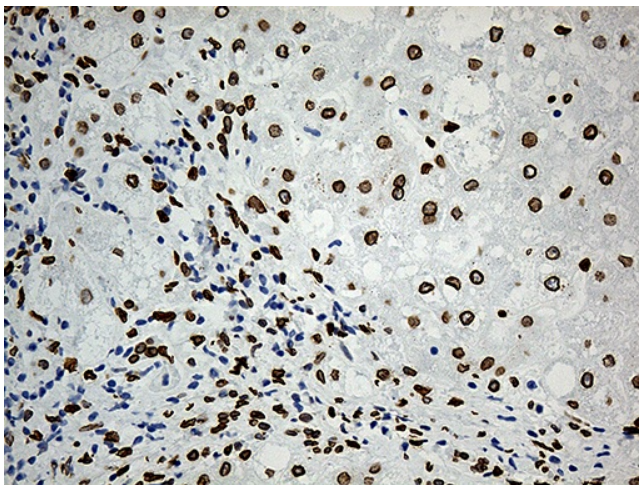
Immunohistochemical staining of paraffin-embedded Human Kidney tissue within the normal limits using anti-SLU7 mouse monoclonal antibody. (Heat-induced epitope retrieval by 1mM EDTA in 10mM Tris buffer (pH8.5) at 120°C for 3min, [TA810915]) (1:1000)



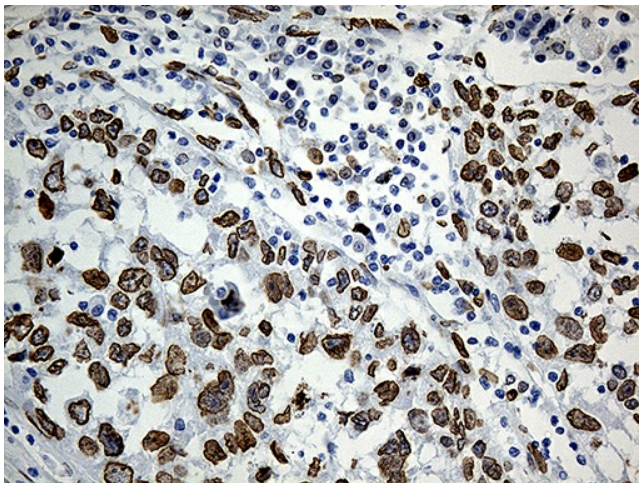
Immunohistochemical staining of paraffin-embedded Carcinoma of Human kidney tissue using anti-SLU7 mouse monoclonal antibody. (Heat-induced epitope retrieval by 1mM EDTA in 10mM Tris buffer (pH8.5) at 120°C for 3min, [TA810915]) (1:1000)



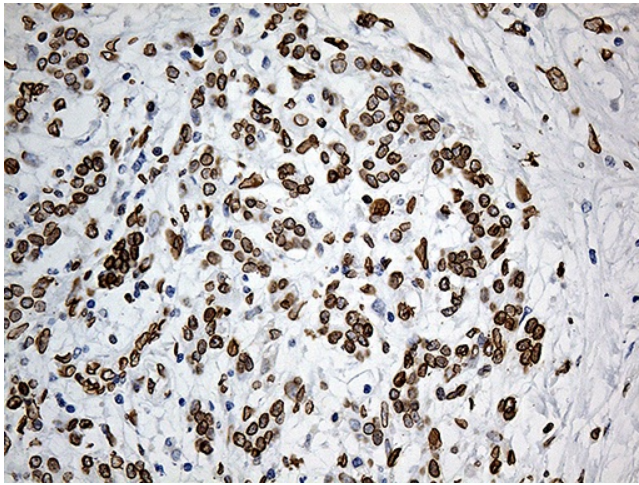
Immunohistochemical staining of paraffin-embedded Human liver tissue within the normal limits using anti-SLU7 mouse monoclonal antibody. (Heat-induced epitope retrieval by 1mM EDTA in 10mM Tris buffer (pH8.5) at 120°C for 3min, [TA810915]) (1:1000)



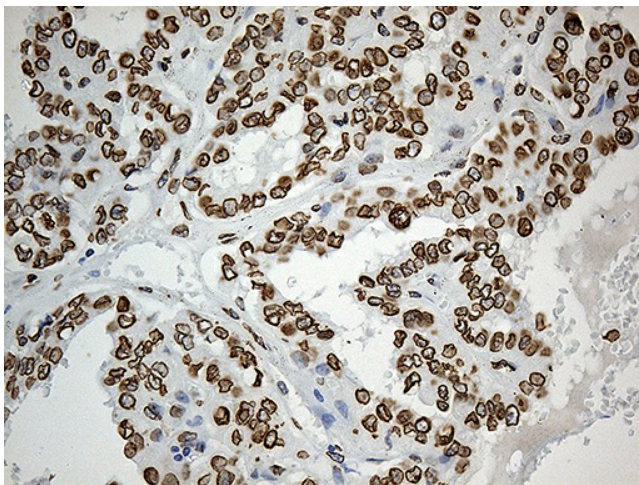
Immunohistochemical staining of paraffin-embedded Carcinoma of Human liver tissue using anti-SLU7 mouse monoclonal antibody. (Heat-induced epitope retrieval by 1mM EDTA in 10mM Tris buffer (pH8.5) at 120°C for 3min, [TA810915]) (1:1000)



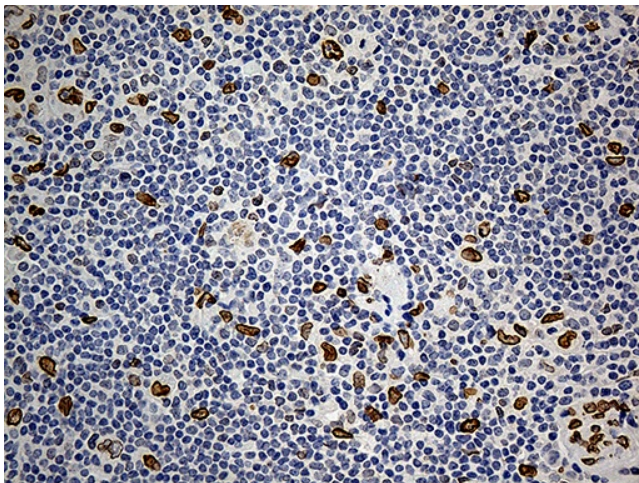
Immunohistochemical staining of paraffin-embedded Carcinoma of Human lung tissue using anti-SLU7 mouse monoclonal antibody. (Heat-induced epitope retrieval by 1mM EDTA in 10mM Tris buffer (pH8.5) at 120°C for 3min, [TA810915]) (1:1000)



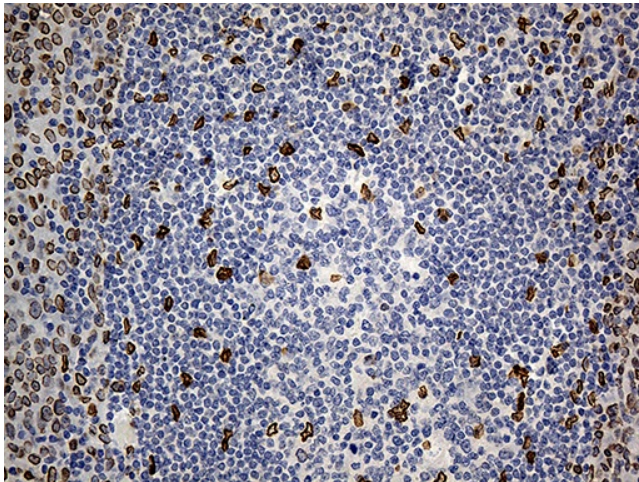
Immunohistochemical staining of paraffin-embedded Carcinoma of Human pancreas tissue using anti-SLU7 mouse monoclonal antibody. (Heat-induced epitope retrieval by 1mM EDTA in 10mM Tris buffer (pH8.5) at 120°C for 3min, [TA810915]) (1:1000)



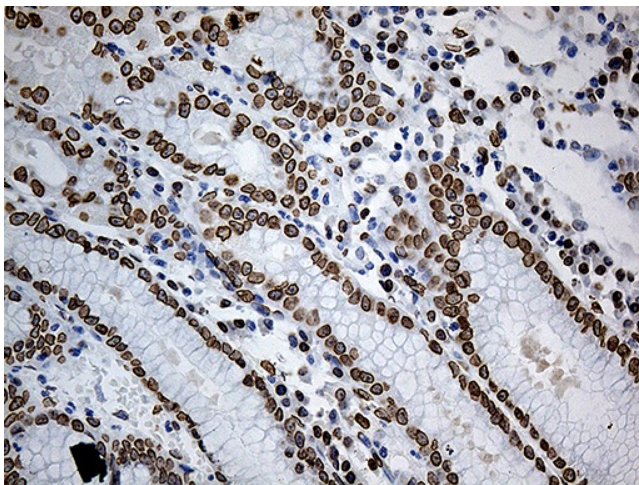
Immunohistochemical staining of paraffin-embedded Carcinoma of Human thyroid tissue using anti-SLU7 mouse monoclonal antibody. (Heat-induced epitope retrieval by 1mM EDTA in 10mM Tris buffer (pH8.5) at 120°C for 3min, [TA810915]) (1:1000)



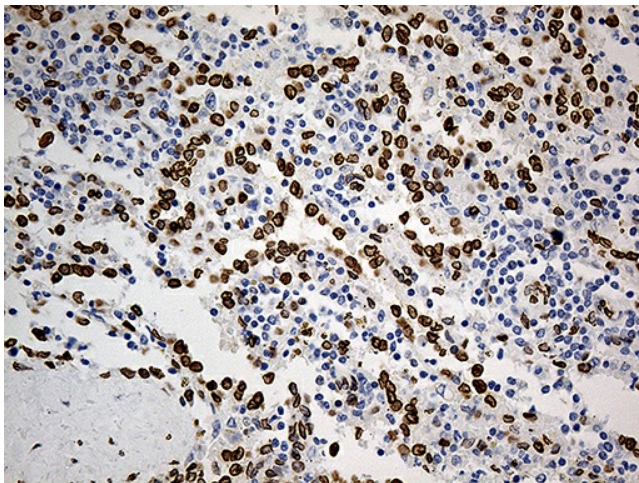
Immunohistochemical staining of paraffin-embedded Human lymphoma tissue using anti-SLU7 mouse monoclonal antibody. (Heat-induced epitope retrieval by 1mM EDTA in 10mM Tris buffer (pH8.5) at 120°C for 3min, [TA810915]) (1:1000)



Immunohistochemical staining of paraffin-embedded Human tonsil within the normal limits using anti-SLU7 mouse monoclonal antibody. (Heat-induced epitope retrieval by 1mM EDTA in 10mM Tris buffer (pH8.5) at 120°C for 3min, [TA810915]) (1:1000)



Immunohistochemical staining of paraffin-embedded Human gastric tissue within the normal limits using anti-SLU7 mouse monoclonal antibody. (Heat-induced epitope retrieval by 1mM EDTA in 10mM Tris buffer (pH8.5) at 120°C for 3min, [TA810915]) (1:1000)



Immunohistochemical staining of paraffin-embedded Human spleen tissue within the normal limits using anti-SLU7 mouse monoclonal antibody. (Heat-induced epitope retrieval by 1mM EDTA in 10mM Tris buffer (pH8.5) at 120°C for 3min, [TA810915]) (1:1000)