

Product datasheet for **TA810910BM**

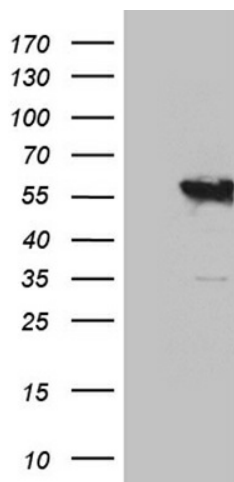
KBTBD4 Mouse Monoclonal Antibody (HRP conjugated) [Clone ID: OTI2B6]

Product data:

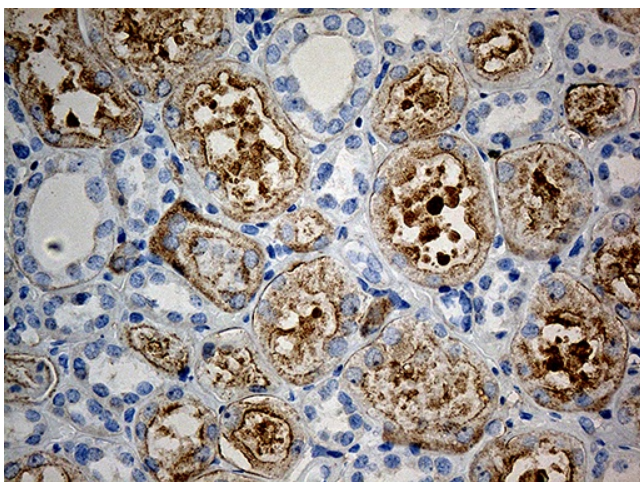
Product Type:	Primary Antibodies
Clone Name:	OTI2B6
Applications:	IHC, WB
Recommended Dilution:	WB 1:2000, IHC 1:500
Reactivity:	Human, Mouse
Host:	Mouse
Isotype:	IgG2a
Clonality:	Monoclonal
Immunogen:	Full length human recombinant protein of human KBTBD4 (NP_060565) produced in E.coli.
Formulation:	PBS (pH 7.3) containing 1% BSA, 50% glycerol.
Concentration:	0.5 mg/ml
Purification:	Purified from mouse ascites fluids or tissue culture supernatant by affinity chromatography (protein A/G)
Conjugation:	HRP
Storage:	Store at -20°C as received.
Stability:	Stable for 12 months from date of receipt.
Predicted Protein Size:	58 kDa
Gene Name:	kelch repeat and BTB domain containing 4
Database Link:	NP_060565 Entrez Gene 55709 Human Q9NVX7
Synonyms:	BKLHD4; HSPC252



[View online »](#)

Product images:

HEK293T cells were transfected with the pCMV6-ENTRY control (Cat# [PS100001], Left lane) or pCMV6-ENTRY KBTBD4 (Cat# [RC211572], Right lane) cDNA for 48 hrs and lysed. Equivalent amounts of cell lysates (5 ug per lane) were separated by SDS-PAGE and immunoblotted with anti-KBTBD4 antibody (Cat# [TA810910]). Positive lysates [LY413311] (100ug) and [LC413311] (20ug) can be purchased separately from OriGene.



Immunohistochemical staining of paraffin-embedded Human Kidney tissue within the normal limits using anti-KBTBD4 mouse monoclonal antibody. (Heat-induced epitope retrieval by 1mM EDTA in 10mM Tris buffer (pH8.5) at 120°C for 3min, [TA810910]) (1:500)