

Product datasheet for **TA810907S**

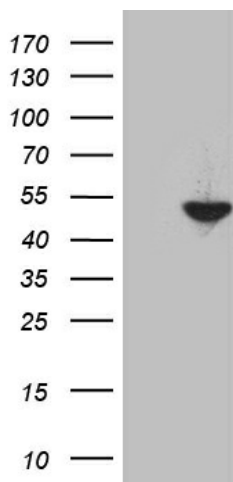
Antizyme inhibitor 1 (AZIN1) Mouse Monoclonal Antibody [Clone ID: OTI3C3]

Product data:

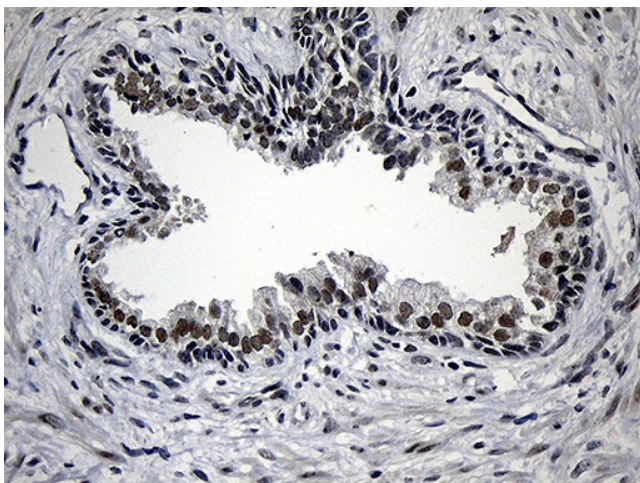
| | |
|-------------------------|--|
| Product Type: | Primary Antibodies |
| Clone Name: | OTI3C3 |
| Applications: | IHC, WB |
| Recommended Dilution: | WB 1:2000, IHC 1:2000 |
| Reactivity: | Human, Mouse, Rat |
| Host: | Mouse |
| Isotype: | IgG2b |
| Clonality: | Monoclonal |
| Immunogen: | Human recombinant protein fragment corresponding to amino acids 260-448 of human AZIN1 (NP_056962) produced in E.coli. |
| Formulation: | PBS (pH 7.3) containing 1% BSA, 50% glycerol and 0.02% sodium azide. |
| Concentration: | 1 mg/ml |
| Purification: | Purified from mouse ascites fluids or tissue culture supernatant by affinity chromatography (protein A/G) |
| Conjugation: | Unconjugated |
| Storage: | Store at -20°C as received. |
| Stability: | Stable for 12 months from date of receipt. |
| Predicted Protein Size: | 49.4 kDa |
| Gene Name: | antizyme inhibitor 1 |
| Database Link: | NP_056962 Entrez Gene 58961 Rat Entrez Gene 51582 Human O14977 |
| Synonyms: | AZI; AZIA1; OAZI; OAZIN; ODC1L |
| Protein Families: | Druggable Genome |



[View online »](#)

Product images:

HEK293T cells were transfected with the pCMV6-ENTRY control (Left lane) or pCMV6-ENTRY AZIN1 ([RC200022], Right lane) cDNA for 48 hrs and lysed. Equivalent amounts of cell lysates (5 ug per lane) were separated by SDS-PAGE and immunoblotted with anti-AZIN1. Positive lysates [LY402474] (100ug) and [LC402474] (20ug) can be purchased separately from OriGene.



Immunohistochemical staining of paraffin-embedded Human prostate tissue within the normal limits using anti-AZIN1 mouse monoclonal antibody. (Heat-induced epitope retrieval by 1mM EDTA in 10mM Tris buffer (pH8.5) at 120°C for 3min, [TA810907]) (1:2000)