

## Product datasheet for **TA810903BM**

### RPL27 Mouse Monoclonal Antibody (HRP conjugated) [Clone ID: OTI6D3]

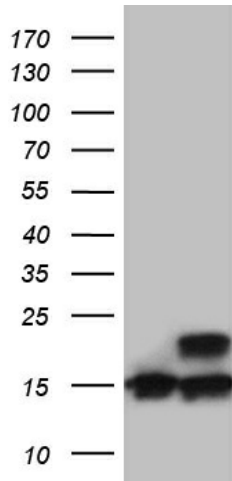
#### Product data:

Product Type:	Primary Antibodies
Clone Name:	OTI6D3
Applications:	IHC, WB
Recommended Dilution:	WB 1:500~2000, IHC 1:2000
Reactivity:	Human, Mouse, Rat
Host:	Mouse
Isotype:	IgG1
Clonality:	Monoclonal
Immunogen:	Full length human recombinant protein of human RPL27 (NP_000979) produced in E.coli.
Formulation:	PBS (pH 7.3) containing 1% BSA, 50% glycerol.
Concentration:	0.5 mg/ml
Purification:	Purified from mouse ascites fluids or tissue culture supernatant by affinity chromatography (protein A/G)
Conjugation:	HRP
Storage:	Store at -20°C as received.
Stability:	Stable for 12 months from date of receipt.
Predicted Protein Size:	15.6 kDa
Gene Name:	ribosomal protein L27
Database Link:	<a href="#">NP_000979</a> <a href="#">Entrez Gene 19942 Mouse</a> <a href="#">Entrez Gene 6155 Human</a> <a href="#">P61353</a>
Synonyms:	L27
Protein Families:	Druggable Genome
Protein Pathways:	Ribosome

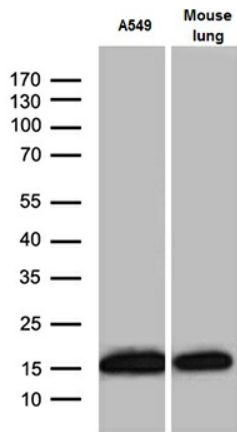


[View online »](#)

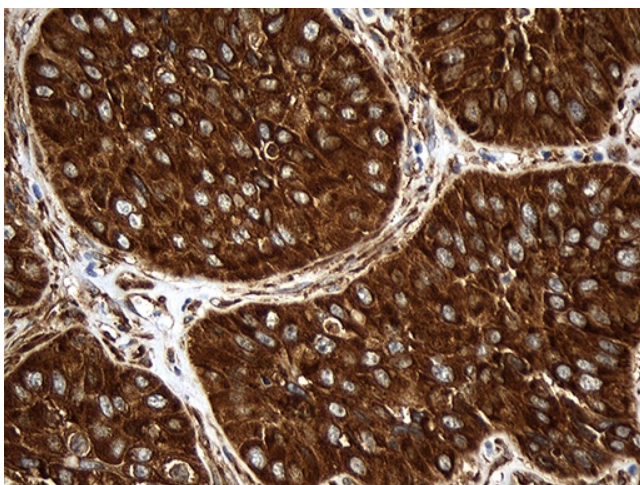
**Product images:**



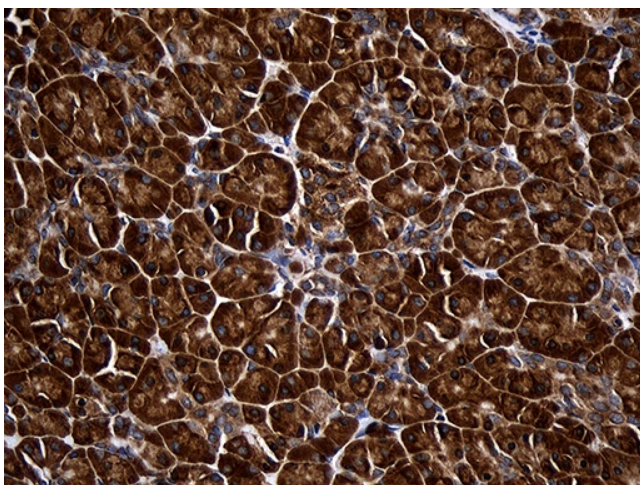
HEK293T cells were transfected with the pCMV6-ENTRY control (Cat# [PS100001], Left lane) or pCMV6-ENTRY RPL27 (Cat# [RC210654], Right lane) cDNA for 48 hrs and lysed. Equivalent amounts of cell lysates (5 ug per lane) were separated by SDS-PAGE and immunoblotted with anti-RPL27 (Cat# [TA810903])(1:2000). Positive lysates [LY424410] (100ug) and [LC424410] (20ug) can be purchased separately from OriGene.



Western blot analysis of extracts (35ug) from A549 and mouse lung tissue lysate by using anti-RPL27 monoclonal antibody (1:500).



Immunohistochemical staining of paraffin-embedded Carcinoma of Human lung tissue using anti-RPL27 mouse monoclonal antibody. (Heat-induced epitope retrieval by 1mM EDTA in 10mM Tris buffer (pH8.5) at 120°C for 3min, [TA810903]) (1:2000)



Immunohistochemical staining of paraffin-embedded Human pancreas tissue within the normal limits using anti-RPL27 mouse monoclonal antibody. (Heat-induced epitope retrieval by 1mM EDTA in 10mM Tris buffer (pH8.5) at 120°C for 3min, [TA810903]) (1:2000)